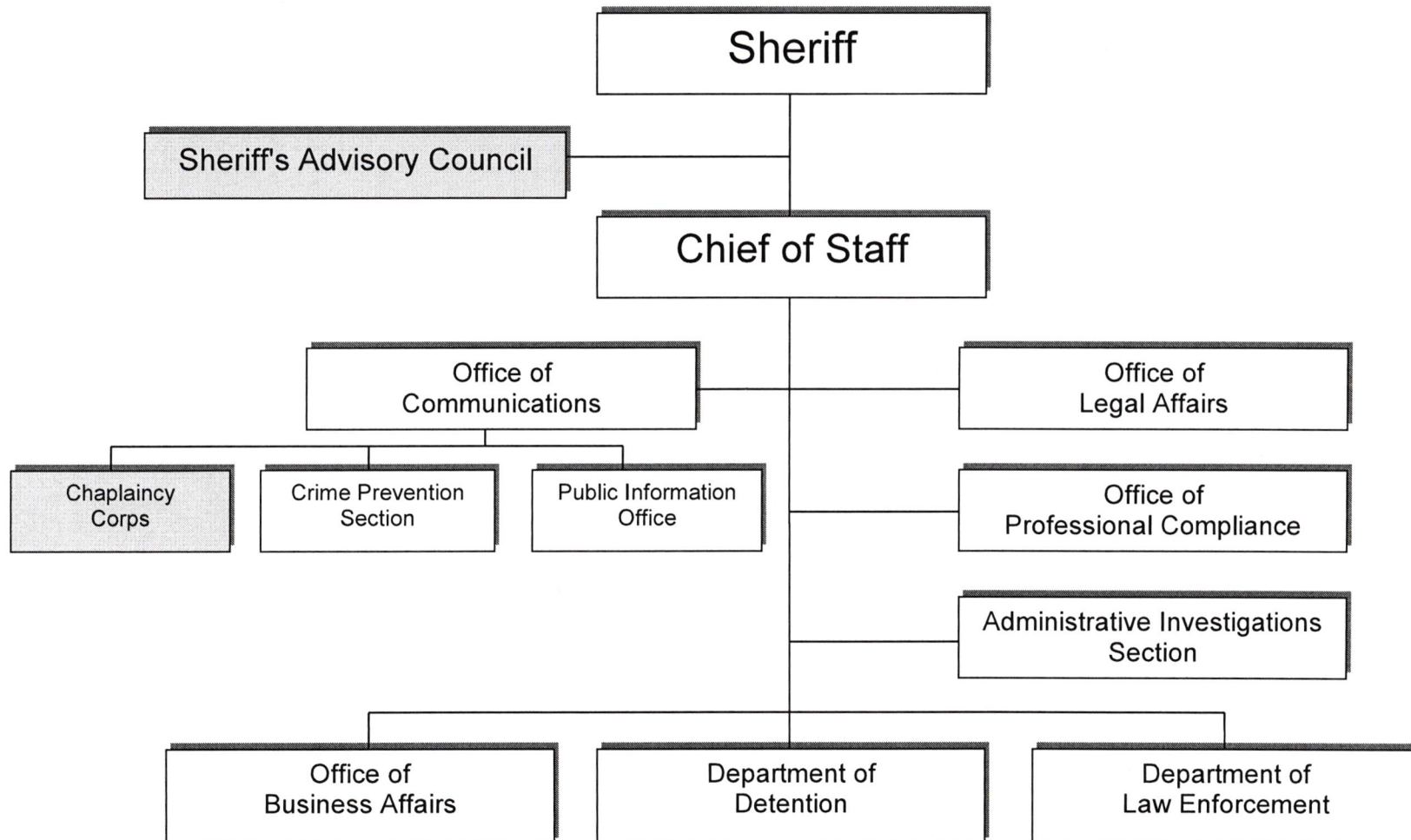
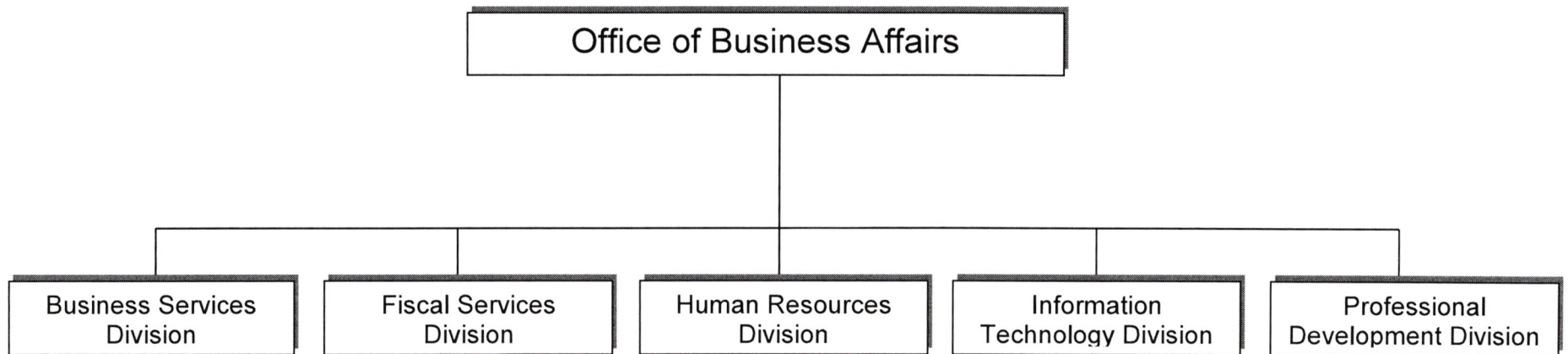


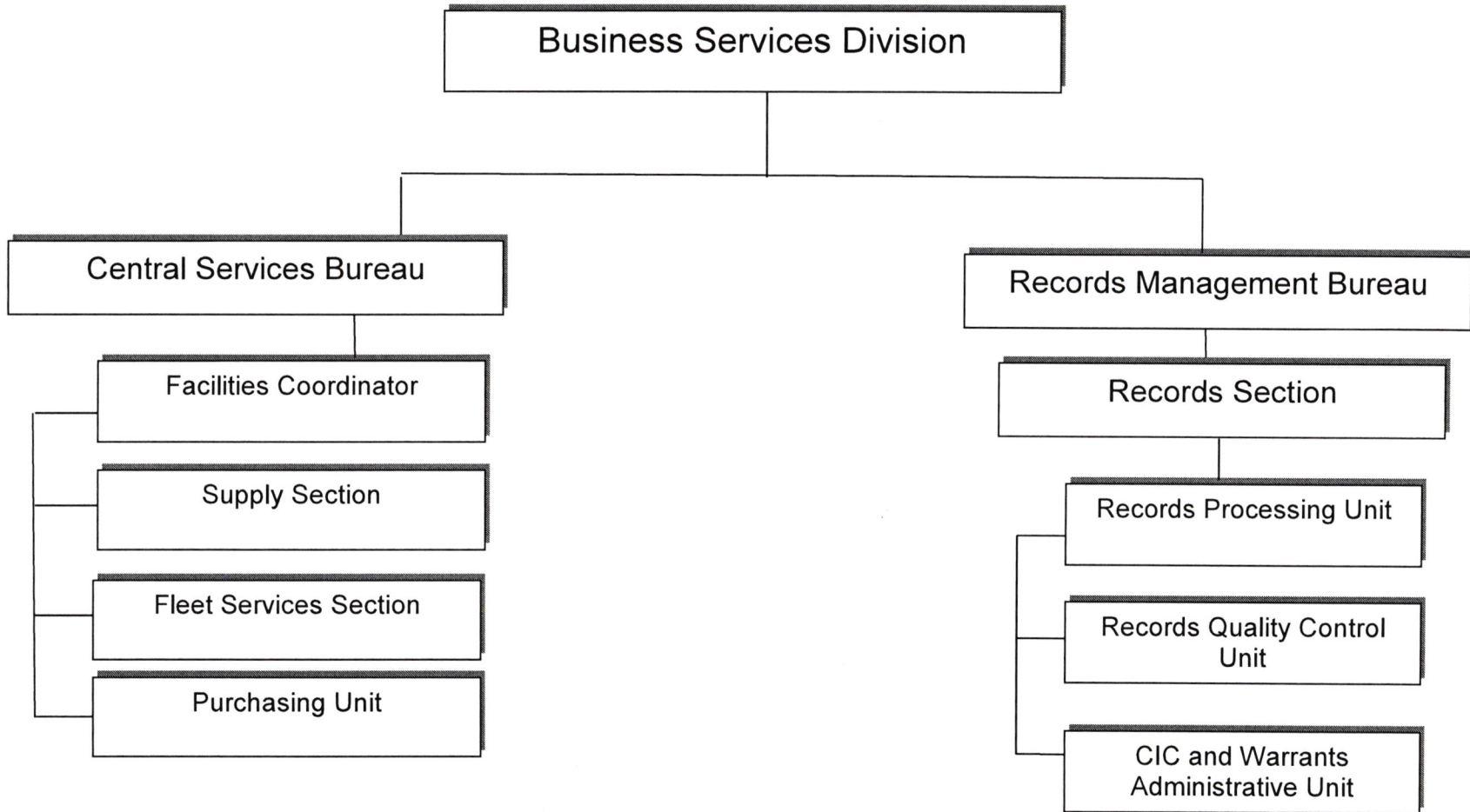
# POLK COUNTY SHERIFF'S OFFICE ORGANIZATIONAL STRUCTURE OFFICE OF THE SHERIFF



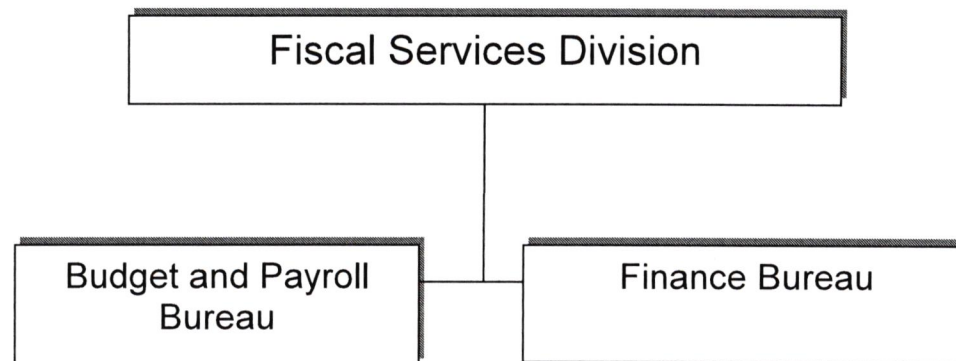
OFFICE OF BUSINESS AFFAIRS



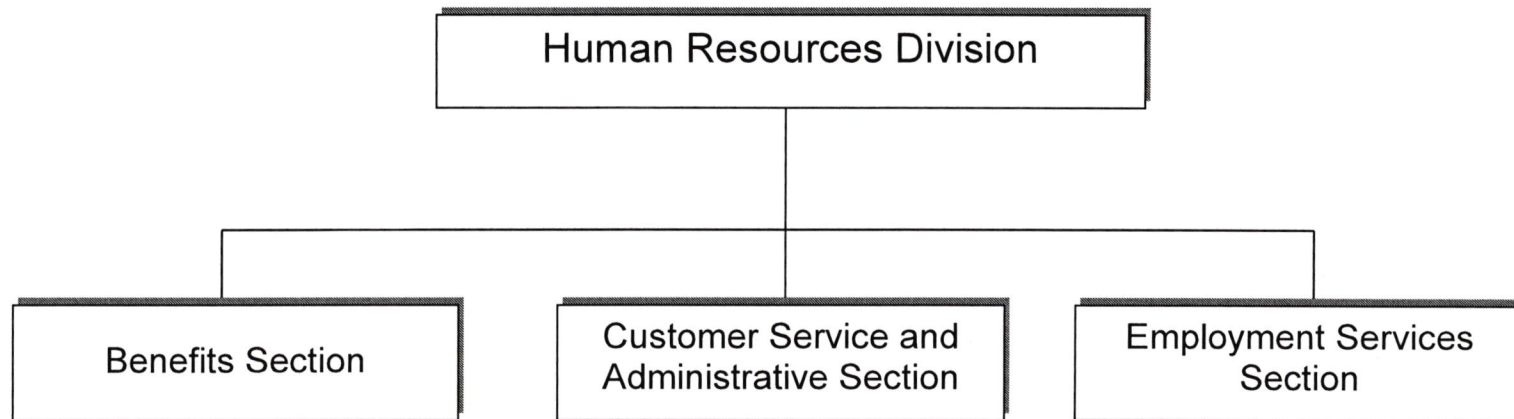
# BUSINESS SERVICES DIVISION



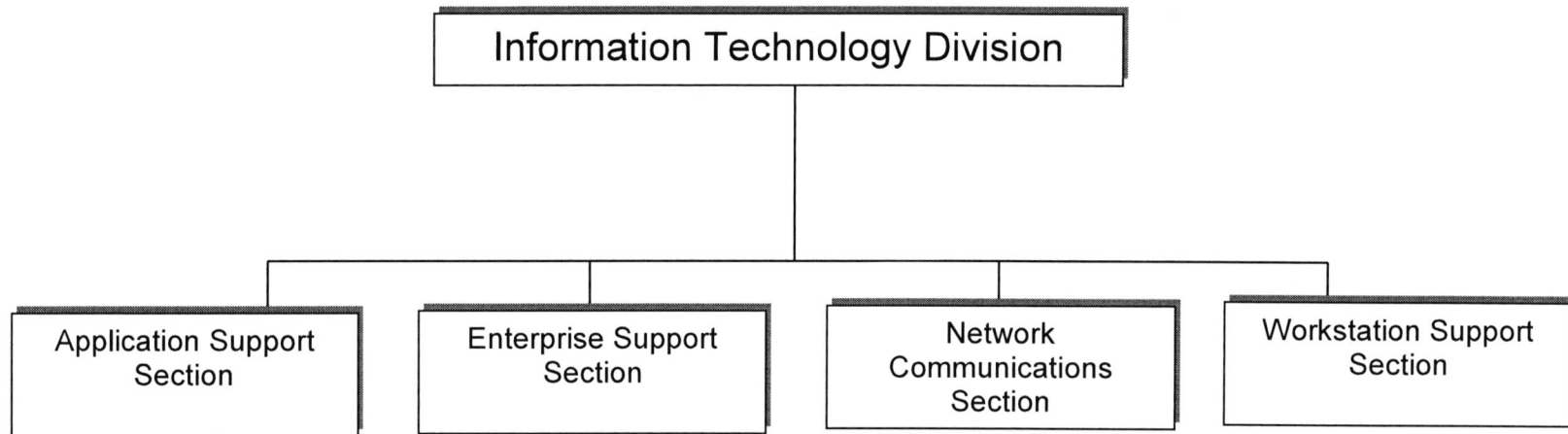
## FISCAL SERVICES DIVISION



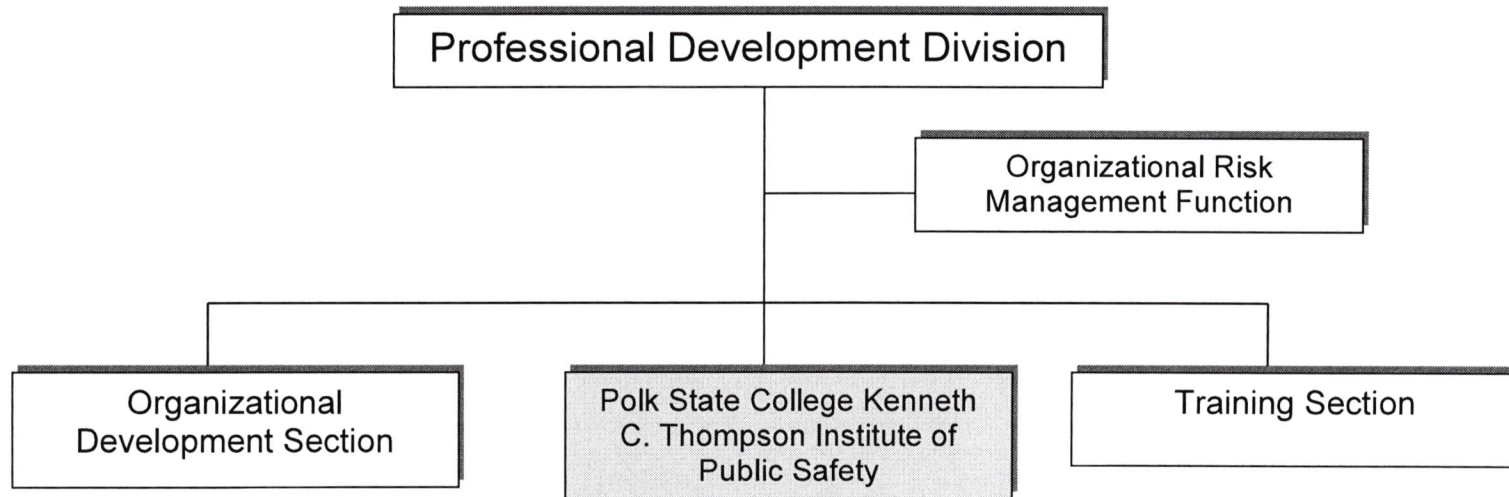
## HUMAN RESOURCES DIVISION



## INFORMATION TECHNOLOGY DIVISION

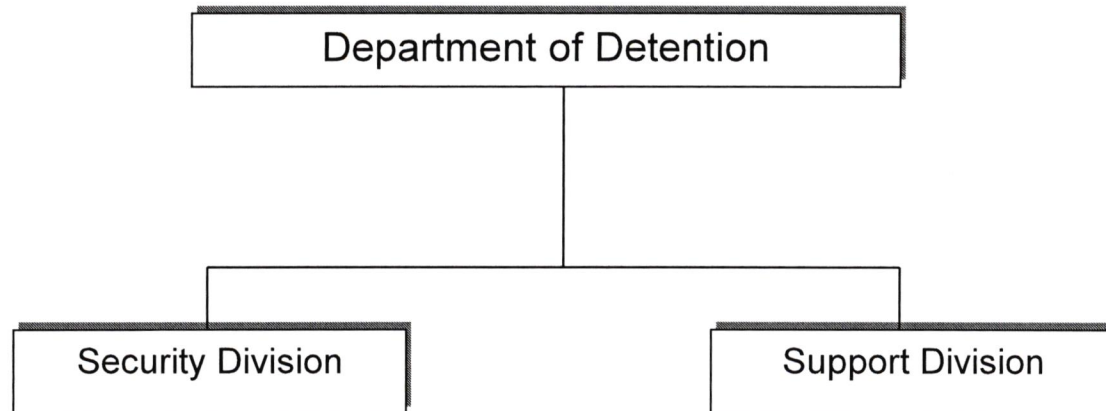


## PROFESSIONAL DEVELOPMENT DIVISION



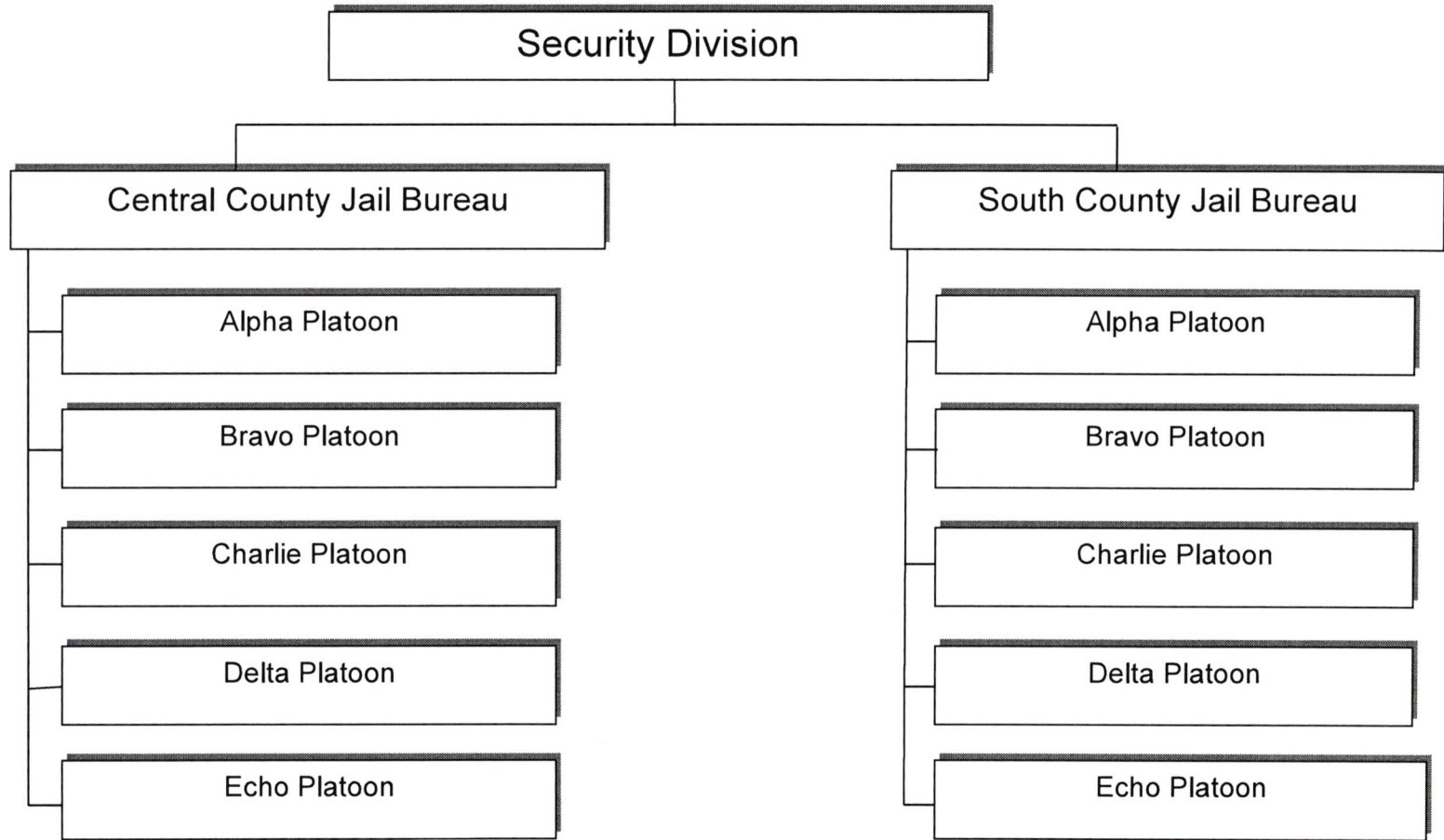
The shaded area indicates components that have a contractual agreement with Polk State College.

DEPARTMENT OF DETENTION

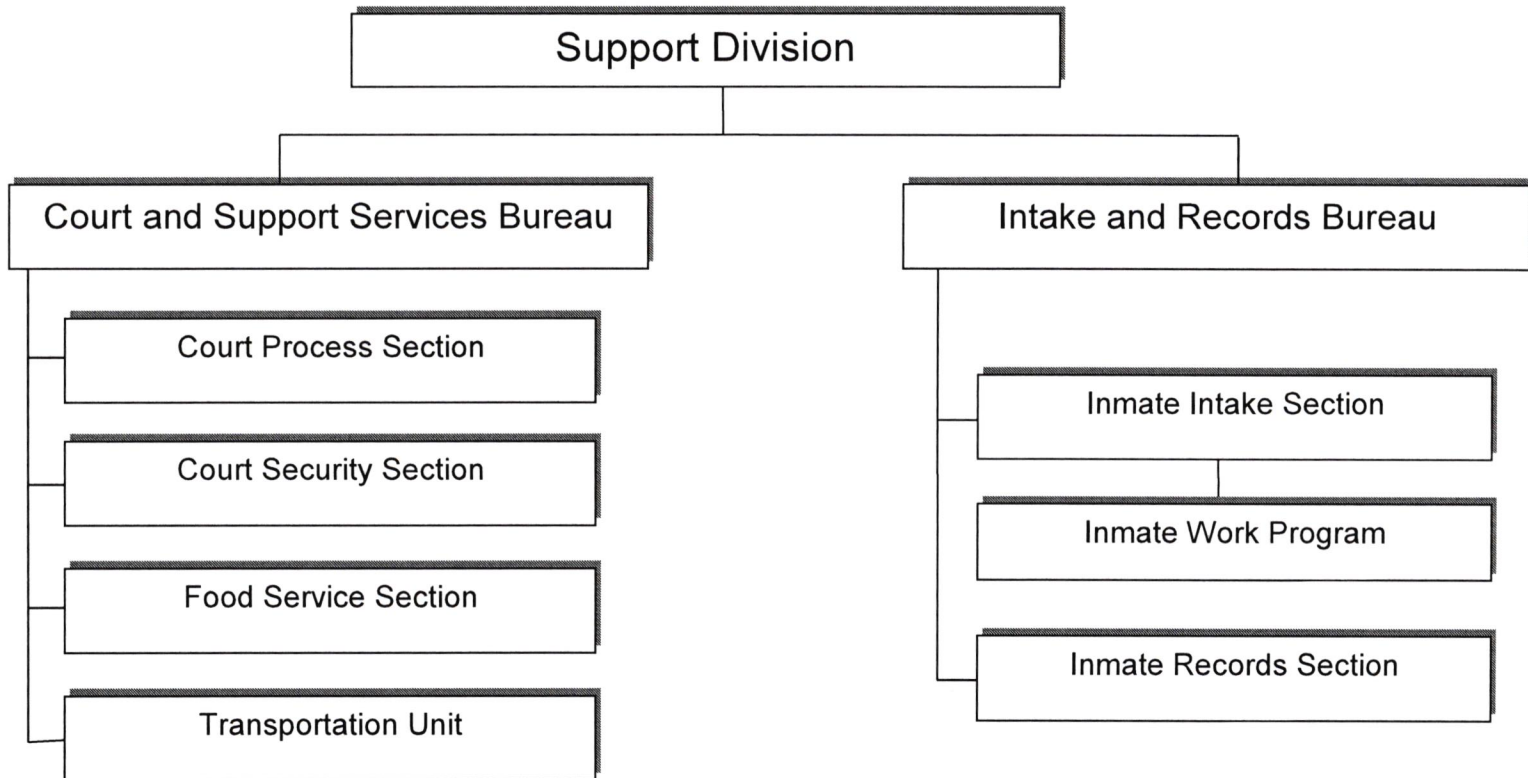




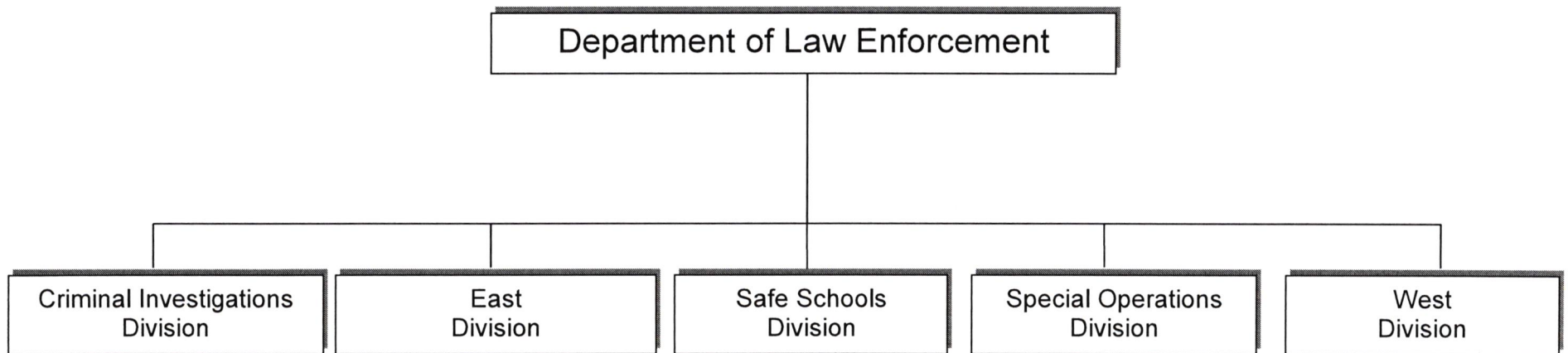
# SECURITY DIVISION



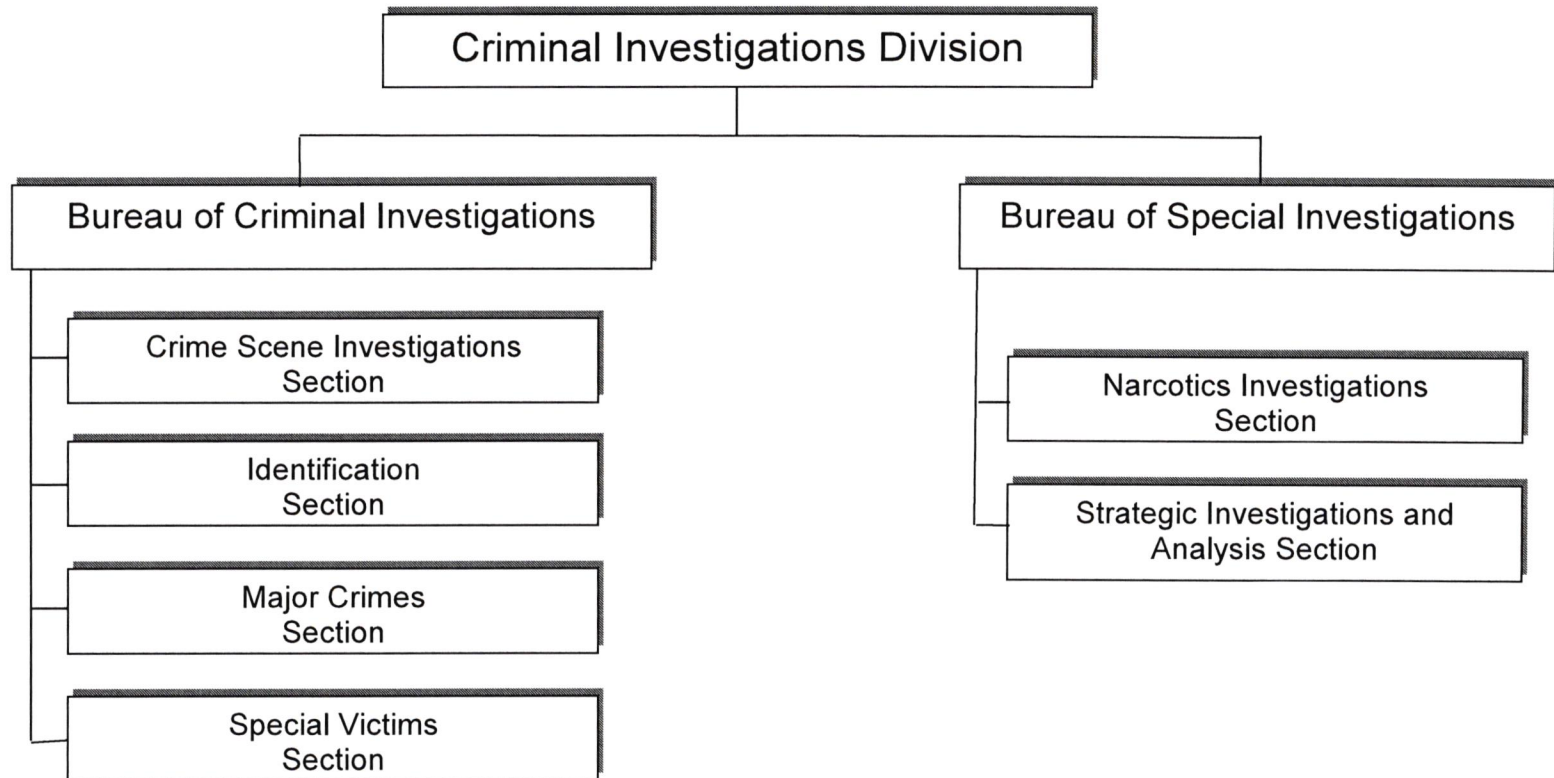
## SUPPORT DIVISION



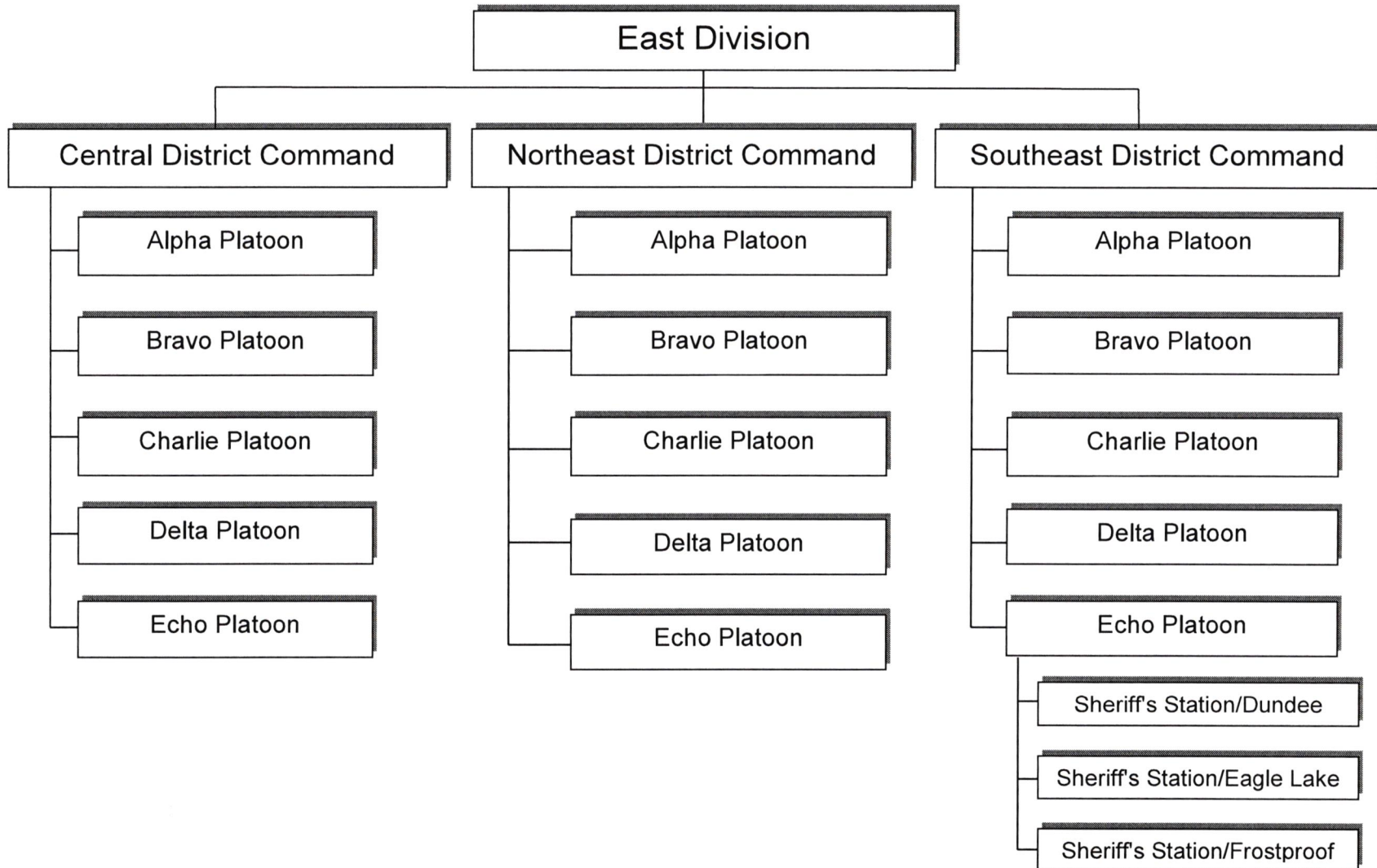
DEPARTMENT OF LAW ENFORCEMENT



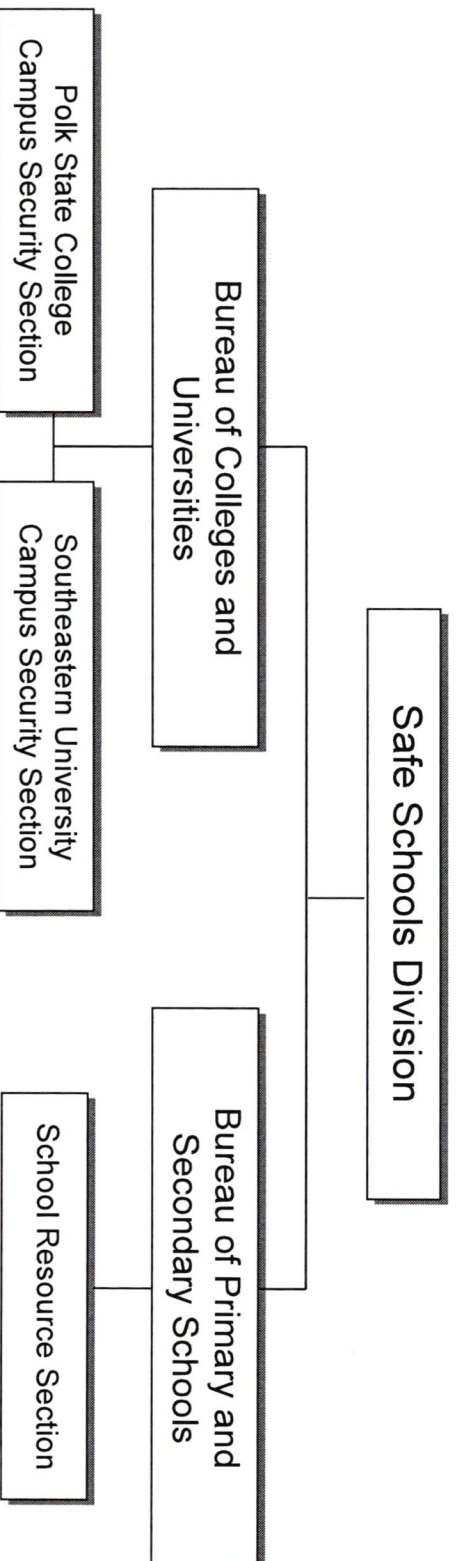
# CRIMINAL INVESTIGATIONS DIVISION



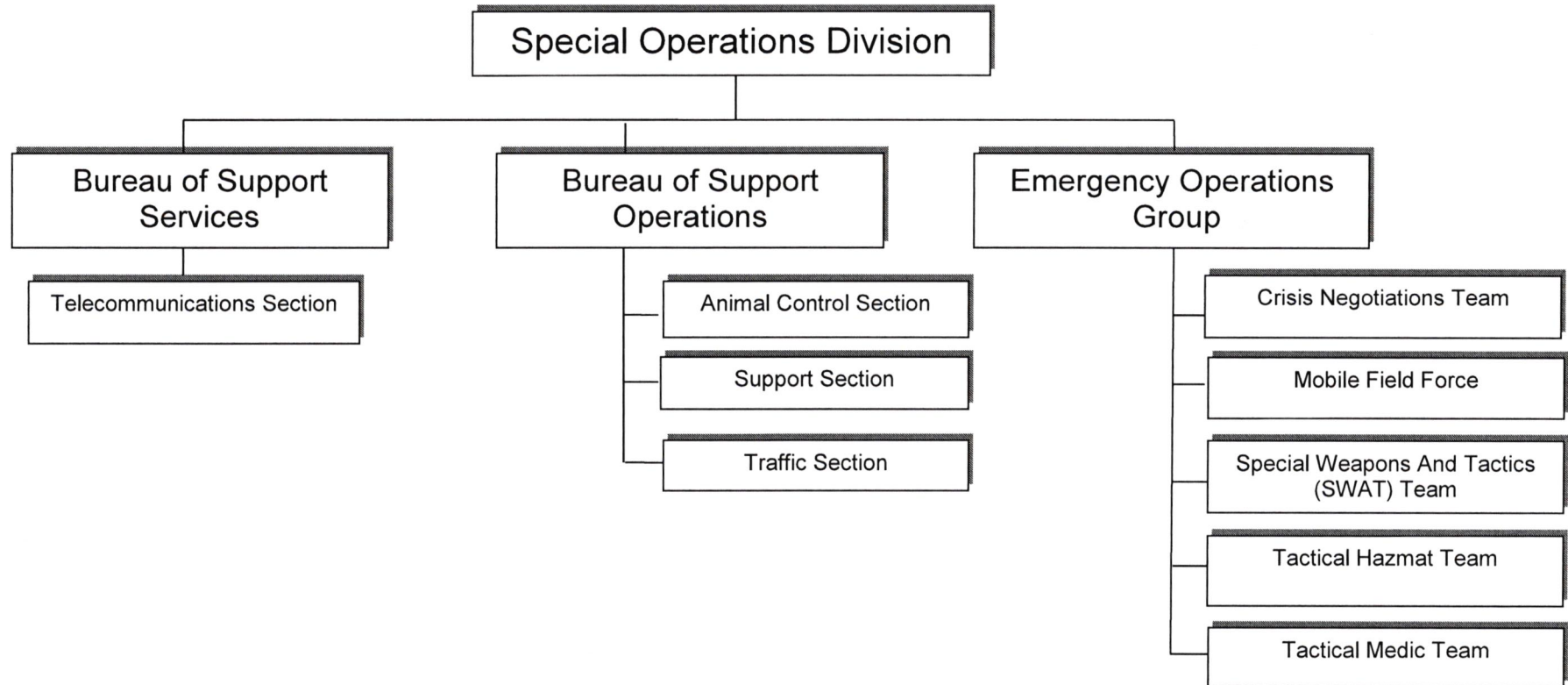
# EAST DIVISION



SAFE SCHOOLS DIVISION



# SPECIAL OPERATIONS DIVISION



# WEST DIVISION

