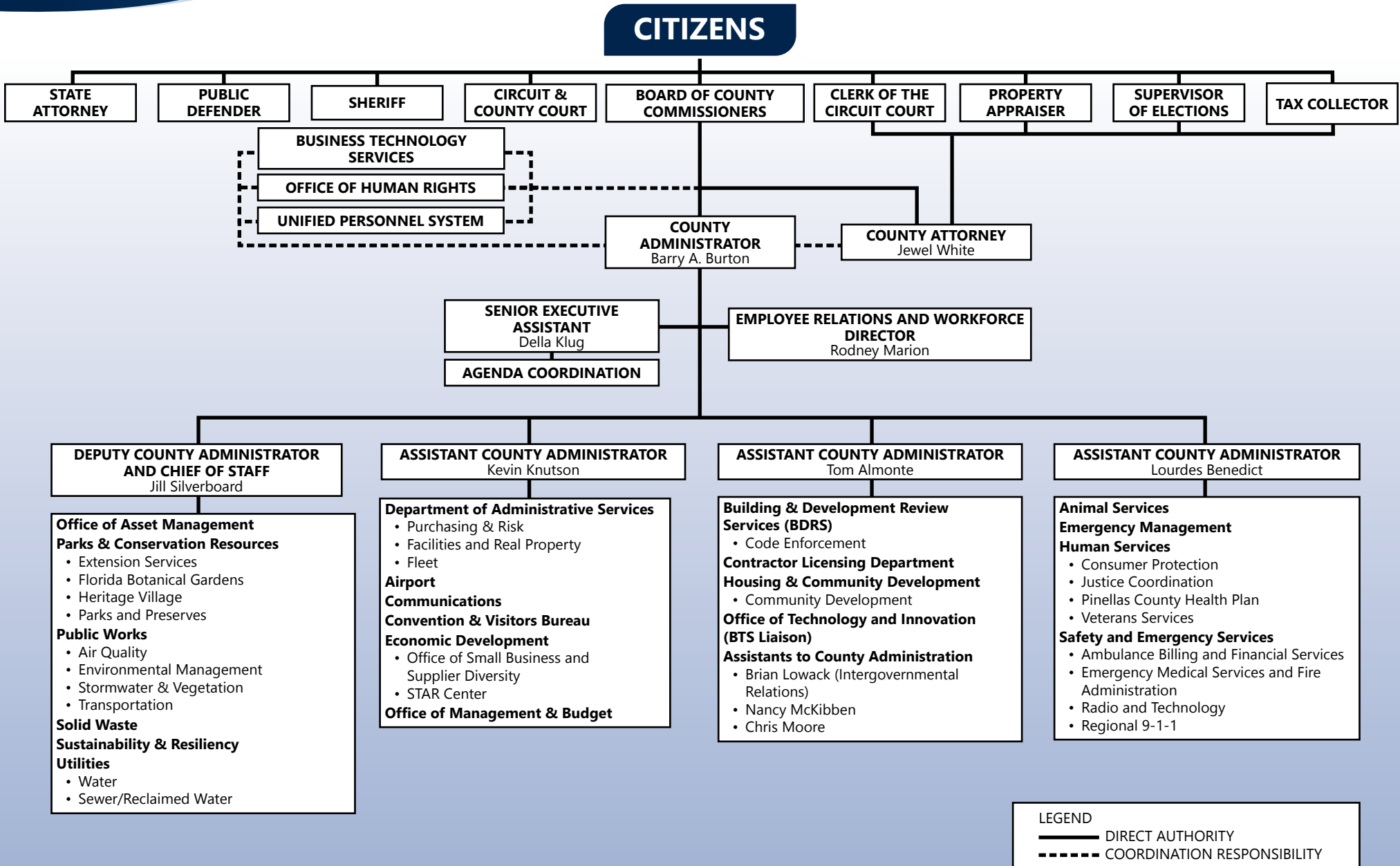
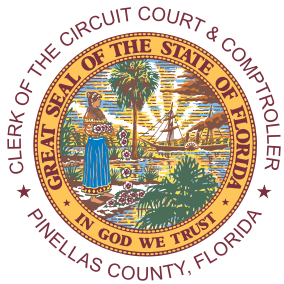




Government Organizational Chart

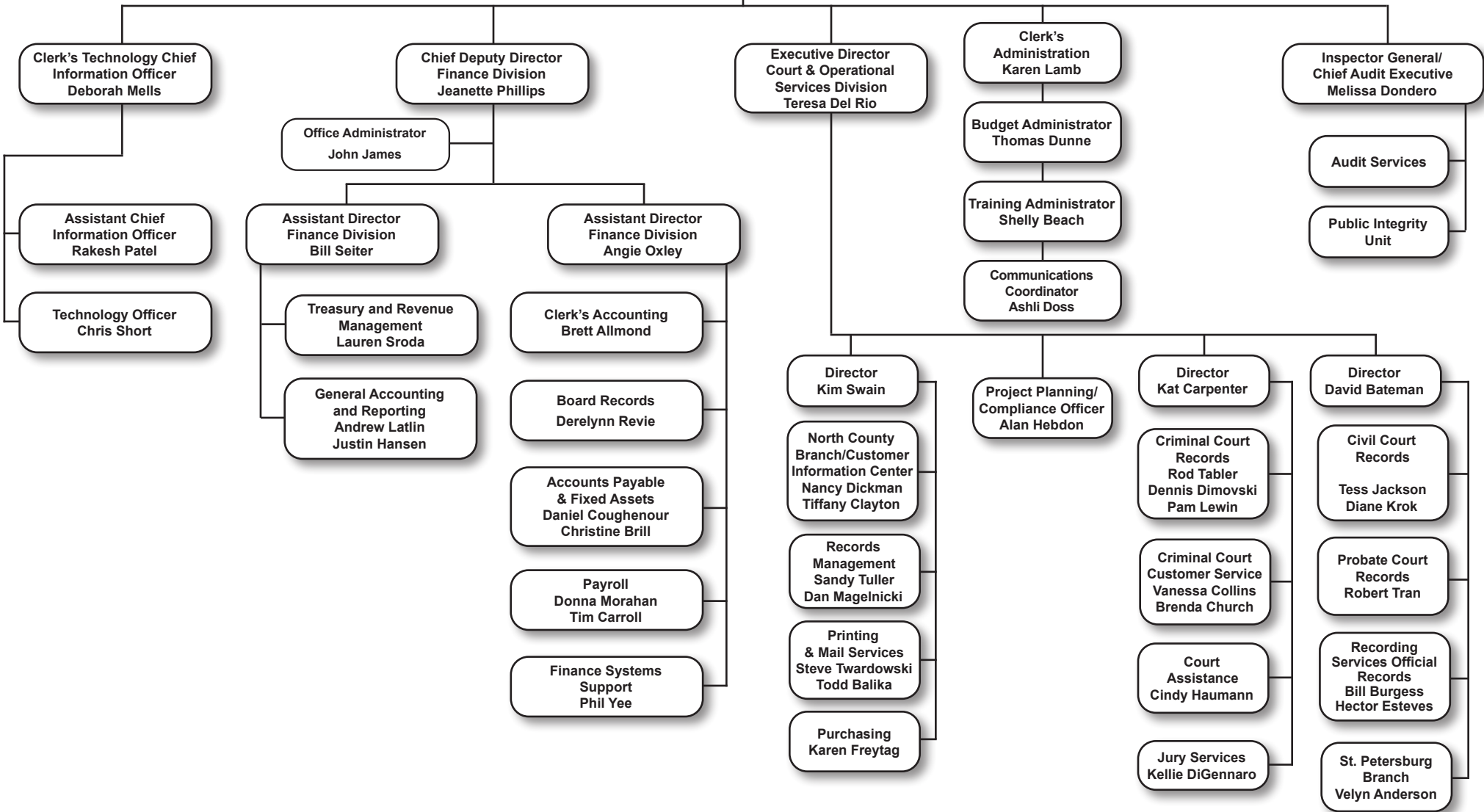


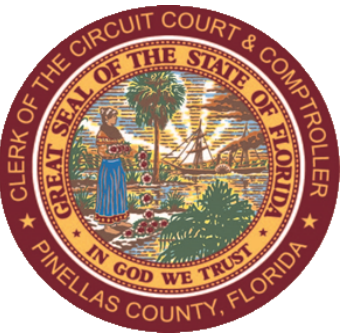


**OFFICE OF THE CLERK OF THE CIRCUIT COURT & COMPTROLLER
PINELLAS COUNTY**

CITIZENS OF PINELLAS COUNTY

KEN BURKE
Clerk of the Circuit Court & Comptroller





Organizational Plan

Finance Division

Ken Burke
Clerk of the Circuit Court and Comptroller

Jeanette Phillips
Chief Deputy Director

John James
Office Administrator

Rachel Blithe
Executive Assistant

Anne Lawler
Chief Strategizer

Angie Oxley
Assistant Director

Bill Seiter
Assistant Director

