


Memorandum



Date: February 25, 2022

To: Honorable Chairman Jose “Pepe” Diaz
and Members, Board of County Commissioners

From: Daniella Levine Cava
Mayor 

Subject: Report on Roadway Pavement & Overlay Locations of Septic Systems - Directive 210852

The report on roadway pavement and overlay locations of septic systems, which was requested pursuant to Board Resolution R-364-21 sponsored by Commissioner Raquel A. Regalado, provides information on projects planned in Miami-Dade County over the next five (5) years that would necessitate the cutting of pavement, including an indication of any locations with corresponding vulnerable septic systems. Moreover, the resolution recognizes Ordinance No. 20-43, adopted in May 2020, which prohibits the cutting into the pavement on any County-owned roadway paved or repaved within the last three (3) years. The resolution also acknowledges forthcoming efforts to install sewer infrastructure (“public sewer laterals”) to incentivize septic-to-sewer conversions, which also requires pavement cutting, and seeks to leverage these efforts to maximize the efficient delivery of public projects.

The report includes a list, attached as Exhibit A, and a map attached as Exhibit B, of 179 projects that may necessitate pavement cutting over the next five (5) years. These projects include approximately 500 parcels with septic systems that are within a proximity of the pavement project that should be feasible for adding the installation of laterals to the project scope of work. 100 of those parcels are vulnerable to groundwater impacts by 2040. Additionally, more than 50 of the vulnerable properties are located within the high-density clusters to be programmed by the Miami-Dade Water and Sewer Department (“WASD”) for priority implementation of the fully funded lateral installation program. WASD will coordinate closely with the pavement project sponsors to ensure the most efficient implementation in these cases. Also provided in this report are descriptions of current processes, as well as the identification of opportunities for enhanced coordination and leveraging of projects to reduce public impacts and further septic-to-sewer conversion efforts.

Stakeholders & Current Project Coordination Efforts

Staff from WASD, the Information Technology Department (“ITD”), and the Department of Transportation and Public Works (“DTPW”) prepared the information contained in this report. They continue to work together with municipal, state and utility partners on developing tools and processes to achieve the adopted legislative objectives. Specifically, the County is working steadfastly to meet the legislative goals outlined in R-364-21 and related directives and ordinances, urging stakeholders to plan efficiently and effectively together, which is also a key action in the County’s Resilient 305 Strategy (“Action 55”).

Coordination of capital projects in the right of way is an ongoing effort. Among other tools, the iMDC Utility Coordination GIS Viewer (“Viewer”) facilitates project coordination between municipalities, County agencies and utilities. It was developed in 2017 in recognition that with thousands of capital improvement projects and other roadway projects planned by Miami-Dade County, project coordination among all agencies is critical to minimize construction impact to residents and potentially reduce project-related costs.

The addition of water and sewer infrastructure installations in partner projects is coordinated through a Memorandum of Agreement with County Departments and a Joint Participation Agreement (“JPA”) executed in 2017 with outside agencies, such as the Florida Department of Transportation (“FDOT”). The Viewer currently hosts information on past, present and future construction projects impacting the roadway. WASD, DTPW, FDOT, and the City of Miami currently enter project information into the system, which is then made available on the web. Access to this project information allows agencies to better plan and potentially advance projects while taking advantage of location synergies. Additionally, projects that share a portion of space and time are automatically identified.

Coordination Creates Opportunities

WASD has used the Viewer since its inception and the associated utility coordination process to extend water mains through partner projects in the past. WASD’s ongoing utility coordination process has recently been amended to include a review of parcels without sewer accounts to determine if sewer infrastructure abuts the project extent, presenting an opportunity to install sewer laterals in the scope of work delivered by the project owner. This is just one of the pathways for installing public laterals for the approximately 12,000 parcels abutting sewer infrastructure.

As projects to expand the sewer system get funded and programmed, they will be entered into the Viewer to improve efficient delivery.

Recommendations and Future Phases

It is recommended that all municipalities within Miami-Dade County be required to submit roadway projects for integration into the Viewer and other GIS planning tools. WASD and DTPW, in partnership with the ITD - Geospatial Technologies Division, will coordinate with existing working groups, such as the Utility Roundtable, to encourage municipal partners to provide project data to be added to the Viewer.

Future phases should focus on strategies to incorporate private roadway projects. Consideration should also be given to whether to include private utility projects, for example, broadband providers. However, the benefit may be limited given the roadway work primarily involves directional boring compared to pavement cutting along large swaths of roadway that might align with other planned projects or be adjacent to numerous parcels with septic systems.

Honorable Chairman Jose "Pepe" Diaz
and Members, Board of County Commissioners
Page 2

Multiple benefits can be gained through improved coordination on capital projects, including reduced disruptions, increased efficiencies and economies of scale, advancement of septic-to-sewer conversions, and a reduction in violations of the County's Pavement Moratorium. The administration will evaluate the need for agreements and/or an administrative order to further enhance the coordination of projects in the right of way.

Should you require additional information, please contact Roy Coley, Director, Miami-Dade Water and Sewer Department, at 786-552-8200 or Roy.Coley@miamidade.gov.

c: Geri Bonzon-Keenan, County Attorney
Gerald Sanchez, First Assistant County Attorney
Jess McCarty, Executive Assistant County Attorney
Office of the Mayor Senior Staff
Roy Coley, Director, Water and Sewer Department
Eulois Cleckley, Director, Department of Transportation and Public Works
Yinka Majekodunmi, Commission Auditor
Jennifer Moon, Chief, Office of Policy and Budgetary Affairs
Melissa Adames, Director, Clerk of the Board
Eugene Love, Agenda Coordinator

Exhibit A

Potential Pavement Cutting Projects in Miami-Dade County (5 Year Outlook)

AGENCY NAME	PROJECT ID	PROJECT NAME	PROJECT SCOPE	Total Number of Septic Systems within 50 feet of project	Non-Vulnerable by 2040	Compromised or Failure by 2040	Total Number of septic systems within 50 feet of project and Abutting existing sewer infrastructure (Abutting)	Non-Vulnerable by 2040	Compromised or Failure by 2040
TOTALS				4399	3482	604	500	400	100
DTPW	S3001656	S3001656 - RESURFACING - LEISURE CITY - SW 288-296 ST BETWEEN SW 147-157 AV	RESURFACING	366	354	0	12	12	0
DTPW	68854	BELMAR PUMP STATION	DRAINAGE IMPROVEMENTS ON COUNTY MAINTAINED ROADS	190	112	47	31	29	2
DTPW	S3002524	S3002524 - WIDEN NE 159 ST FROM NE 6 AVE TO W DIXIE HWY	ROAD WIDENING	165	165	0	0	0	0
DTPW	S68991	RESURFACING SW 92 AVE FROM SW 24 ST TO SW 56 ST	RESURFACING	99	84	5	10	10	0
DTPW	S3003077	RESURFACING SW 48 ST FROM SW 57 AVE TO LINCOLN DR	RESURFACING	89	89	0	0	0	0
DTPW	S3002521	S3002521 - WIDEN NE 151 ST FROM NE 10 AVE to W DIXIE HWY	ROAD WIDENING	79	78	1	0	0	0
DTPW	S3003100	RESURFACING NW 199 ST FROM NW 2 AVE TO NW 17 AVE	RESURFACING	58	58	0	0	0	0
DTPW	S303379	GRIFFING BLVD FROM NE 107 ST TO NE 121 ST	RESURFACING	55	41	13	1	1	0
DTPW	S3003106	RESURFACING SW 48 ST FROM SW 82 AVE TO SW 97 AVE	RESURFACING	53	53	0	0	0	0
DTPW	S3003381	RESURFACING SW 37 AVE FROM INGRAHAM HWY TO US-1	RESURFACING	39	38	0	1	1	0
DTPW	S3000734	S3000734 - MIAMI AVENUE FROM 17 STREET TO 87 STREET	RESURFACING	34	3	17	14	14	0
DTPW	S3003382	RESURFACING NE 107 ST FROM GRIFFING BLVD TO NE 12 AVE	RESURFACING	29	25	4	0	0	0
DTPW	S3003197	RESURFACING NW 42 AVE FROM NW 156 ST TO NW 199 ST	RESURFACING	29	28	1	0	0	0
DTPW	S3003102	RESURFACING NW 22 AVE FROM NW 151 ST TO NW 163 ST	RESURFACING	28	20	8	0	0	0
DTPW	S3001128	S3001128 - RESURFACE SW 168 STREET FROM SW 78 AVENUE TO OLD CUTLER ROAD	RESURFACING	28	25	1	2	2	0
DTPW	S3003199	RESURFACING NW 32 AVE FROM GRATIGNY PKWY TO NW 103 ST	RESURFACING	25	25	0	0	0	0

AGENCY NAME	PROJECT ID	PROJECT NAME	PROJECT SCOPE	Total Number of Septic Systems within 50 feet of project	Non-Vulnerable by 2040	Compromised or Failure by 2040	Total Number of septic systems within 50 feet of project and Abutting existing sewer infrastructure (Abutting)	Non-Vulnerable by 2040	Compromised or Failure by 2040
DTPW	S3002482	S3002482 - WIDEN SW 24 ST FROM SW 107 AVE TO SW 87 AVE	ROAD WIDENING	23	18	0	5	5	0
DTPW	S3002941	SW 288 ST FROM SW 177 AVE TO SW 187 AVE	RESURFACING	21	21	0	0	0	0
DTPW	68854	20200298-NE 201 ST TO NE 202 ST FROM NE 25 CT TO NE 26 AVE ENCHANTED LAKE SEC 2	DRAINAGE IMPROVEMENTS ON COUNTY MAINTAINED ROADS	20	1	19	0	0	0
DTPW	S3002593	INTERSECTION IMPROVEMENT ON OLD CUTLER RD SW 184 ST TO SW 67 AVE	ROAD WIDENING	20	18	0	2	2	0
DTPW	S3002931	NE 16 AVE FROM NE 135 ST TO NE 151 ST	RESURFACING	20	8	8	4	2	2
DTPW	S68854	S68854 - 20170132 - NW 18 AVE FROM NW 62 ST TO NW 71 ST 20170028 DRAINAGE IMPROVEMENT PROJECT	DRAINAGE IMPROVEMENTS	20	0	0	20	20	0
DTPW	S3003097	RESURFACING NE 12 AVE FROM NE 149 ST TO NE 143 ST	RESURFACING	18	0	0	18	2	16
DTPW	68854	SW 53 AVE FROM SW 72 ST TO SW 74 ST	DRAINAGE IMPROVEMENTS ON COUNTY MAINTAINED ROADS	17	17	0	0	0	0
DTPW	S3003198	RESURFACING NE 199 ST FROM HIGHLAND LAKES BLVD TO NE 18 AVE	RESURFACING	16	11	5	0	0	0
DTPW	S3001471	SIDEWALK - SOUTH SIDE OF SW 94TH ST FROM SW 87TH AVE TO SW 94TH AVE	INFRASTRUCTURE IMPROVEMENTS	16	13	1	2	2	0
DTPW	S3003519	RESURFACING NW 95 ST FROM NW 6 AVE TO NW 3 AVE	RESURFACING	13	13	0	0	0	0
DTPW	S3003380	RESURFACING NW 32 AVE FROM OKEECHOBEE RD TO NW 36 ST	RESURFACING	11	4	0	7	1	6
DTPW	68854	20190327 - ALLEY EAST OF S LE JEUNE RD BETWEEN SW 15 STREET AND SW 16 STREET	DRAINAGE IMPROVEMENTS ON COUNTY MAINTAINED ROADS	9	8	0	1	1	0
DTPW	S3000020	S3000020 - NW SOUTH RIVER DRIVE FROM NW 32 AVE TO NW 38 AVE	ROAD WIDENING	8	0	1	7	4	3
DTPW	S77527	S77527 - WEST DIXIE HIGHWAY FROM NE 163 STREET TO NE 173 STREET	ROAD WIDENING	8	0	1	7	2	5
DTPW	S3000835	SW 52 AVE FROM SW 72 ST TO SW 74 TER	DRAINAGE IMPROVEMENTS	8	0	0	8	8	0
DTPW	S3003200	RESURFACING NW 46 ST FROM OKEECHOBEE RD TO NW 27 AVE	RESURFACING	7	2	0	5	5	0

AGENCY NAME	PROJECT ID	PROJECT NAME	PROJECT SCOPE	Total Number of Septic Systems within 50 feet of project	Non-Vulnerable by 2040	Compromised or Failure by 2040	Total Number of septic systems within 50 feet of project and Abutting existing sewer infrastructure (Abutting)	Non-Vulnerable by 2040	Compromised or Failure by 2040
DTPW	S3002591	RESURFACING SW 117 AVE FROM SW 136 ST TO SW 152 ST	RESURFACING	7	7	0	0	0	0
DTPW	S3002940	RESURFACING SW 157 AVE FROM US-1 TO SW 280 ST	RESURFACING	5	2	0	3	3	0
DTPW	68854	NE 14 AVE AND NE 144 ST ARCH CREEK PH.2	DRAINAGE IMPROVEMENTS ON COUNTY MAINTAINED ROADS	4	3	1	0	0	0
DTPW	S3003101	RESURFACING NW 199 ST FROM NW 47 AVE TO NW 27 AVE	RESURFACING	4	0	0	4	4	0
DTPW	S3000595	S3000595 - WIDEN NW 25 STREET FROM NW 117 AVENUE TO NW 87 AVENUE	ROAD WIDENING	4	2	2	0	0	0
DTPW	68854	Enchanted Lakes Outfall Project Phase 1-outfall and seawall (2350 NE 192 St) (2361 NE 192 St)	DRAINAGE IMPROVEMENTS ON COUNTY MAINTAINED ROADS	3	0	3	0	0	0
DTPW	S3003099	RESURFACING NW 67 AVE FROM NW 138 ST TO SR826	RESURFACING	3	0	0	3	3	0
DTPW	S3002923	RESURFACING NW N RIVER DR FROM NW 17 AVE TO NW 22 AVE	RESURFACING	3	0	0	3	2	1
DTPW	68854	NE 143 ST AND NE 18 AVE ARCH CREEK PH.1	DRAINAGE IMPROVEMENTS ON COUNTY MAINTAINED ROADS	2	0	2	0	0	0
DTPW	S3003120	RESURFACING NW SOUTH RIVER DR FROM NW 31 ST TO TAMiami SWING BRIDGE	RESURFACING	2	0	1	1	0	1
DTPW	S3002673	S3002673 - WIDEN NW 84 AVE FROM NW 58 ST TO NW 74 ST	ROAD WIDENING	2	0	0	2	1	1
DTPW	S75530	SOUTH BAYSHORE DR FROM DARWIN STREET TO MERCY WAY	ROAD WIDENING	2	1	0	1	0	1
DTPW	68854	20190333 - NW 79 AVENUE FROM NW 197 STREET TO NW 199 TERRACE	DRAINAGE IMPROVEMENTS ON COUNTY MAINTAINED ROADS	1	0	0	1	1	0
DTPW	S3002522	NE 151 STREET FROM BISCAYNE BLVD TO BAY VISTA	ROAD WIDENING	1	0	0	1	0	1
DTPW	S3002916	NW 41 ST FROM NW 114 AVE TO NW 107 AVE	RESURFACING	1	0	0	1	1	0
DTPW	68854	NW 61 ST FROM NW 72 AVE TO NW 74 AVE	DRAINAGE IMPROVEMENTS ON COUNTY MAINTAINED ROADS	1	0	0	1	1	0
DTPW	68854	NW 85 ST RD FROM NW 2 AVENUE AND NW 5 AVENUE	DRAINAGE IMPROVEMENTS ON COUNTY MAINTAINED ROADS	1	0	1	0	0	0
DTPW	S3003018	RESURFACING SW 72 ST FROM SW 147 AVE TO SW 137 AVE	RESURFACING	1	0	0	1	1	0
DTPW	S3002529	S3001250 - ROAD S3002529 - WIDEN SW 152 AVE FROM US-1 TO SW 312 ST	ROAD WIDENING	1	0	0	1	1	0

AGENCY NAME	PROJECT ID	PROJECT NAME	PROJECT SCOPE	Total Number of Septic Systems within 50 feet of project	Non-Vulnerable by 2040	Compromised or Failure by 2040	Total Number of septic systems within 50 feet of project and Abutting existing sewer infrastructure (Abutting)	Non-Vulnerable by 2040	Compromised or Failure by 2040
DTPW	S3001653	S3001653 - TWO NEW LANES ON SW 157 AVE FROM SW 26 ST TO SW 8 ST	ROAD WIDENING	1	0	0	1	1	0
DTPW	S3001653	S3001653 - TWO NEW LANES ON SW 157 AVE FROM SW 42 ST TO SW 26 ST	ROAD WIDENING	1	0	0	1	1	0
DTPW	S3002101	S3002101 - WIDEN SW 127 AVE FROM SW 136 ST TO SW 128 ST	ROAD WIDENING	1	0	0	1	0	1
DTPW	S77238	S77238 - SW 328 STREET FROM SW 187 AVENUE TO US-1	ROAD WIDENING	1	0	0	1	0	1
DTPW	68854	SW 129 AVE FROM SW 22 ST TO SW 25 TERR	DRAINAGE IMPROVEMENTS ON COUNTY MAINTAINED ROADS	1	0	0	1	1	0
DTPW	20200274-15-69832	SW 264 ST FROM SW 177 AVE TO SW 217 AVE	Road Improvement	62	30	32	0	0	0
DTPW	20200096-5-69806	NW 97 AVE FROM NW 41 ST TO NW 52 ST	Resurfacing	1	0	1	0	0	0
FDOT Corridor	410646.5	SR 934/NE/NW 79 ST F	Add Lanes & Reconstruct	113	72	17	24	20	4
FDOT Corridor	410646.7	SR 934/NW 79 STREET	Safety Project	9	6	0	3	3	0
FDOT Corridor	427369.1	SR 997/KROME AVENUE	Add Lanes & Reconstruct	3	2	1	0	0	0
FDOT Corridor	429346.4	SR 916/NW/NE 135 ST	Landscaping	31	15	16	0	0	0
FDOT Corridor	436426.1	SR 948/NW 36 ST FROM	Modal Systems Planning	9	0	0	9	9	0
FDOT Corridor	437782.1	SR 968/FLAGLER ST FR	Pd&E/Emo Study	39	14	6	19	10	9
FDOT Corridor	437784.1	SR 94/KENDALL DR FRO	Pd&E/Emo Study	16	12	0	4	4	0
FDOT Corridor	438076.1	SR 9/NW 27 AVE FROM	Pd&E/Emo Study	98	87	5	6	5	1
FDOT Corridor	439976.1	SR 909/WEST DIXIE HW	Resurfacing	8	8	0	0	0	0
FDOT Corridor	443899.1	SR A1A/HARDING AVENU	Resurfacing	8	0	0	8	3	5
FDOT Corridor	443903.1	SR 932/NW-NE 103 STR	Resurfacing	46	46	0	0	0	0
FDOT Corridor	443905.1	SR 90/US 41/SW 7 STR	Resurfacing	3	0	0	3	2	1
FDOT Corridor	443907.1	SR 994/QUAIL ROOST D	Resurfacing	35	32	3	0	0	0
FDOT Corridor	443908.1	SR 5/US 1/S DIXIE HI	Resurfacing	4	4	0	0	0	0
FDOT Corridor	443910.1	SR 25/US 27/NW 36 ST	Resurfacing	2	0	0	2	2	0
FDOT Corridor	443912.1	SR 5/US 1/BISCAYNE B	Resurfacing	6	3	3	0	0	0
FDOT Corridor	443936.1	SR 909/W DIXIE HIGHW	Resurfacing	19	14	3	2	2	0
FDOT Corridor	443937.1	SR 817/NW 27 AVENUE	Resurfacing	6	6	0	0	0	0
FDOT Corridor	443942.1	SR 9A/I-95 (SHOULDER	Rigid Pavement Rehabilitation	1	1	0	0	0	0
FDOT Corridor	443980.1	SR-932/NW 103 ST. FR	Traffic Ops Improvement	1	0	0	1	1	0
FDOT Corridor	445765.1	SAFE RTS. TO SCHOOL	Pedestrian Safety Improvement	7	7	0	0	0	0
FDOT Corridor	445804.1	SR 994/SW 200 ST/QUA	Pd&E/Emo Study	24	19	3	2	2	0
FDOT Corridor	445987.1	SR 9336/SW 392 ST FR	Resurfacing	3	1	2	0	0	0
FDOT Corridor	445989.1	SR 9336/SW 192 AVE F	Resurfacing	14	8	6	0	0	0
FDOT Corridor	445990.1	SR 976/SW 40 ST/BIRD	Resurfacing	9	9	0	0	0	0
FDOT Corridor	445991.1	SR 976/SW 40 ST/BIRD	Resurfacing	31	29	0	2	2	0
FDOT Corridor	445992.1	SR 9336/SW 344 ST/ P	Resurfacing	3	1	1	1	0	1
FDOT Corridor	445996.1	SR 5/US 1/BISCAYNE B	Resurfacing	3	0	0	3	3	0
FDOT Corridor	446000.1	SR 90/TAMIAMI TRAIL/	Resurfacing	5	0	0	5	5	0
FDOT Corridor	446001.1	SR 976/BIRD ROAD/SW	Resurfacing	1	1	0	0	0	0

AGENCY NAME	PROJECT ID	PROJECT NAME	PROJECT SCOPE	Total Number of Septic Systems within 50 feet of project	Non-Vulnerable by 2040	Compromised or Failure by 2040	Total Number of septic systems within 50 feet of project and Abutting existing sewer infrastructure (Abutting)	Non-Vulnerable by 2040	Compromised or Failure by 2040
FDOT Corridor	446002.1	SR 953/LEJEUNE RD/SW	Resurfacing	4	4	0	0	0	0
FDOT Corridor	446054.1	MIAMI SHORES - SR 91	Bike Lane/Sidewalk	37	37	0	0	0	0
FDOT Corridor	446298.1	SAFE RTS. TO SCHOOL	Pedestrian Safety Improvement	4	4	0	0	0	0
FDOT Corridor	447046.1	SR 90/US 41/SW 8 ST	Pedestrian/Wildlife Overpass	3	0	0	3	1	2
FDOT Corridor	447214.1	SR 5/US-1/BISCAYNE B	Traffic Signals	5	0	0	5	5	0
FDOT Corridor	447798.1	SR 5/US-1/S DIXIE HW	Resurfacing	7	4	0	3	3	0
FDOT Corridor	447800.1	SR 860/MIAMI GARDENS	Resurfacing	20	19	0	1	1	0
FDOT Corridor	447801.1	SR 860/MIAMI GARDENS	Resurfacing	3	3	0	0	0	0
FDOT Corridor	447802.1	SR 5/US-1/S DIXIE HW	Resurfacing	7	3	0	4	4	0
FDOT Corridor	447803.1	SR 953/LEJEUNE RD/NW	Resurfacing	5	3	2	0	0	0
FDOT Corridor	447804.1	SR 959/RED ROAD/SW-N	Resurfacing	1	0	0	1	1	0
FDOT Corridor	447808.1	SR 90/US-41/SW 7TH S	Resurfacing	4	0	0	4	4	0
FDOT Corridor	447809.1	SR 953/LEJEUNE RD/SW	Resurfacing	2	0	0	2	2	0
FDOT Corridor	447818.1	SR 932/NE 103RD ST F	Resurfacing	44	38	6	0	0	0
FDOT Corridor	447826.1	SR 852/COUNTY LINE R	Resurfacing	2	0	0	2	1	1
FDOT Corridor	447827.1	SR 5/US-1/BISCAYNE B	Resurfacing	29	29	0	0	0	0
FDOT Corridor	447829.1	SR 953/LEJEUNE RD/SW	Resurfacing	92	89	0	3	3	0
FDOT Corridor	447830.1	SR 5/US-1/BISCAYNE B	Resurfacing	1	0	0	1	1	0
FDOT Corridor	448829.1	LIGHTING IMPROVEMENT	Lighting	4	3	0	1	1	0
FDOT Corridor	448996.1	NW 32ND AVENUE OVER	Bridge Replacement	1	1	0	0	0	0
FDOT Corridor	449000.1	SW 152ND STREET OVER	Bridge Replacement	3	2	1	0	0	0
FDOT Corridor	449361.1	SR 25/NW 36 STREET F	Pedestrian Safety Improvement	2	0	0	2	2	0
FDOT Corridor	449368.1	SR 5/US-1 FROM MARLI	Safety Project	1	0	0	1	1	0
FDOT Corridor	449452.1	CITY OF N. MIAMI - P	Bridge Replacement	2	2	0	0	0	0
FDOT Corridor	449753.1	SW 160 STREET FROM S	Bike Lane/Sidewalk	8	7	0	1	1	0
FDOT Corridor	449755.1	SW 160 STREET FROM S	Bike Lane/Sidewalk	52	52	0	0	0	0
Miami CIP Area	40-B183608.2	La Pastorita Neighborhood Roadway Improvements Study (40-B183608)	Provide Planning, Design and Construction services for the Pastorita Neighborhood with the goal of promoting pedestrian friendly roadways and neighborhood beautification. Projects will have two phases as follow: Phase 1 - Study shall provide alternative	3	2	1	3	2	1
Miami CIP Area	40-B193207.1	Fire Facilities Resiliency Project (FS10) - Design (40-B193207)	Master plan / site plan, conceptual design, and due diligence studies for replacement of Fire Station #10 at 4101 NW 7th ST	2	2	0	2	2	0
Miami CIP Area	40-B50412.1	SW 23 Terrace from SW 27 Avenue to SW 32 Avenue (40-B50412)	WASD (JPA) Project: Install 2,700 LF of 8-inch water main. Include new fire hydrants. New driveway, sidewalk, curbs, drainage system, milling and resurfacing, reconstruction, overbuild, pavement marking, swale regrading, sodding.	2	2	0	2	2	0
Miami CIP Area	40-B50414.1	SW 24 Terrace from SW 27 Avenue to SW 32 Avenue (40-B50414)	WASD (JPA) Project: Install 2,600 LF of 8-inch water main. New fire hydrants are included. City Project: Driveways, sidewalk, curbs, drainage system, milling and resurfacing, reconstruction, overbuild, pavement marking, swale re-grading and sodding.	2	2	0	2	2	0

AGENCY NAME	PROJECT ID	PROJECT NAME	PROJECT SCOPE	Total Number of Septic Systems within 50 feet of project	Non-Vulnerable by 2040	Compromised or Failure by 2040	Total Number of septic systems within 50 feet of project and Abutting existing sewer infrastructure (Abutting)	Non-Vulnerable by 2040	Compromised or Failure by 2040
Miami CIP Area	40-B183603.1	Miami River Greenway Curtis Park East (40-B183603)	Lap funding Milling and resurfacing, partial reconstruction, adding sidewalks where none exist, ADA ramps, lighting, environmental/archaeological assessment, drainage, landscaping	1	1	0	1	1	0
Miami CIP Area	40-B183611A.1	NW 17th Street from NW 32nd to NW 37th Avenue (40-B183611A)	Pavement reconstruction of NW 17th Street from NW 32nd Avenue to NW 27th Avenue, new drainage system, new curbs, replacement of broken sidewalks, new driveways, ADA ramps, pavement marking / signage, swale regrading, sodding and Construction Administrati	1	0	1	1	0	1
WASDSewer	15186	WASTEWATER SERVICE TO OJUS URBAN AREA DISTRICT - PROJECT D4-A - GRAVITY/FORCE MAINS, SERVICE TO COMMERCIAL PROPERTIES	Extend Sanitary Sewer to unsewered commercial and Industrial areas.Project D4-A. Black & Veatch Report show this as D4-A.	128	68	60	7	4	3
WASDSewer	15151	WATER AND WASTEWATER SERVICE TO COMMERCIAL PROPERTIES - GREEN TECH CORRIDOR - S-8 - BASIN 73	Design, permitting, and installation of 3,760 LF of 8-inch gravity sewer and 10,970 LF of 12-inch water main along NW 27th Ave., from 24th St. to 28th St.	117	92	25	26	23	3
WASDSewer	15146	WW AND WATER SERVICE TO COMMERCIAL PROPERTIES-GREEN TECH CORRIDOR-S-1 SOUTH	Design, permitting, procurement and installation of gravity system and potable water along NW 27 Ave from NW 96 St to NW 88 St.	114	114	0	0	0	0
WASDSewer	15149	WATER AND WASTEWATER SERVICE TO COMMERCIAL PROPERTIES-GREEN TECH CORRIDOR-S-4-GRAVITY-FORCE -WATER MAINS	Extend sanitary sewer to unsewered commercial and industrial property.	94	75	19	5	5	0
WASDSewer	15835	WW SERVICE TO COMMERCIAL PROPERTIES-PROJECT D2-C-2-GRAVITY/FORCE MAIN AND WATER MAINS	NW 87th Street and NW 21st Ct. South Basin D2-C-2 Gravity and FM Sewer Pipe Commercial Corridors. Extend Sanitarysewer service to unsewered commercial & Industrial areas along NW 22nd Avenue.	94	93	1	0	0	0
WASDSewer	15148	WW SERVICE TO COMMERCIAL PROPERTIES-GREEN TECH CORRIDOR-S-3-GRAVITY/FORCE MAINS	Design of gravity system in area bounded by (N) NW 74 St, (S) NW 67 St, (W) NW 35 Ave , (E) NW 29 Ave	69	37	32	2	1	1
WASDSewer	15978	WASTEWATER SERVICE TO COMMERCIAL PROPERTIES-GREEN TCH CORRIDOR S-2 PHASE 2 GRAVITY/FORCE MAIN/WATER (WEST SIDE)	Adding Sewer and upgrading water service to commercial and Industrial areas	66	63	3	0	0	0
WASDSewer	15156	WASTEWATER SERVICE TO COMMERCIAL PROPERTIES-PROJECT D2-A-1 GRAVITY MAINS PHASE 2	NW 27th Ave OPS D2-A Gravity Sewer Pipes, Force Mains for Commercial Corridors. Extend Sanitary sewer service to unsewered commercial & Industrial areas along NW 27 th Avenue. Includes Phase 2 of D2-A-1.	45	43	2	2	1	1

AGENCY NAME	PROJECT ID	PROJECT NAME	PROJECT SCOPE	Total Number of Septic Systems within 50 feet of project	Non-Vulnerable by 2040	Compromised or Failure by 2040	Total Number of septic systems within 50 feet of project and Abutting existing sewer infrastructure (Abutting)	Non-Vulnerable by 2040	Compromised or Failure by 2040
WASDSewer	14868	8-IN REPLACEMENT OF 2,900 LF OF 4-IN ACP FM IN SW 102ND AVE, FROM 56TH ST TO NORTH OF 64TH ST; INSTALLATION OF 2,610 LF OF NEW, 8-IN DIP FM IN SW 60TH ST, FROM 102ND AVE TO EXISTING FM IN 107TH AVE	Install 2,527 LF of 8-in DIP to replace 4-in ACP FM from SW 56 ST to Snapper Creek Elementary School; install 2,610 LF of new, 8-in DIP FM in SW 60th St., from 102nd Ave. to existing FM in 107th Ave	39	25	14	0	0	0
WASDSewer	15147	WW SERVICE TO COMMERCIAL PROPERTIES-GREEN TECH CORRIDOR-S-2-PHASE 1, GRAVITY/FORCE/WATER MAINS - EAST SIDE	GOB Project. Extend Sanitary Sewer to unsewered commercial and industrial areas. 300 LF of 8" GM, 1,620 LF of 15" GM, 1,670 LF of 15" GM, and 2,000 LF of 12" FM	34	33	1	0	0	0
WASDSewer	15517	WATER AND WASTEWATER SERVICES TO COMMERCIAL PROPERTIES-GREEN TECH CORRIDOR-S-8-GRAVITY/FORCE MAINS BASIN 76	Design, permitting and construction of approximately 650 lf of 8-in and 2905 lf of 10-in Gravity Main and 3,650 lf of 12-in Water Main	28	28	0	0	0	0
WASDSewer	15176	PURCHASE OF LAND AND WW SERVICE TO COMMERCIAL PROPERTIES-PROJECT D8-A-GRAVITY/FORCE MAINS	South Dixie Highway OPS D8-A Gravity and FM Sewer Pipe Commercial Corridors. Black & Veatch Report shown as D8-A	27	27	0	7	7	0
WASDSewer	15583	INSTALL A 60-IN, IN-LINE PLUG VALVE IN THE 72-IN FM AT NE 159 ST, EAST OF NE 10 AVE; INSTALL AN 8-IN FM BYPASS (CANAL CROSSING) NEAR NW 16 CT AND 155 TER, FROM NMB DISCHARGE FM INTO 72-IN FM	install a new 60-in, in-line plug valve; include a 72-inch line stop for the replacement of the leaking valve and install an 8-in bypass line and connect to existing valves in the N Miami Bch discharge line and the 72-in FM used for the same purpose.	17	17	0	0	0	0
WASDSewer	15180	WW SERVICE TO COMMERCIAL PROPERTIES-PROJECT D10-A-GRAVITY/FORCE MAINS	SW 40th Street OPS D10-A Gravity Sewer and FM Sewer Pipe Commercial Corridors. Black & VeatchReport shown as D10-A	15	15	0	2	2	0
WASDSewer	15630	WATER AND WASTEWATER SERVICE TO COMMERCIAL PROPERTIES-PROJECT D2-A-2-GRAVITY/FORCE/WATER MAINS	NW 27th Ave OPS D2-A Gravity Sewer Pipes, Force Mains, and Water Mains for Commercial Corridors. Extend Sanitary sewer service & upgrade water service to unsewered commercial & Industrial areas along NW 27th Avenue. Includes Phase 2 D2-A-2.	14	12	2	4	3	1
WASDSewer	16105	FURNISH AND INSTALL A NEW SEWAGE FORCE MAIN ALONG NE 163 STREET / S.R. 826E FROM THE INTRACOASTAL WATERWAY TO BISCAYNE BLVD. / U.S. 1	Perform system modeling, route analysis, development of BODR , topographical survey, soil borings report, design, technical specifications, permitting and provide limited engineering support services during the contract procurement and construction phases	8	2	6	8	2	6

AGENCY NAME	PROJECT ID	PROJECT NAME	PROJECT SCOPE	Total Number of Septic Systems within 50 feet of project	Non-Vulnerable by 2040	Compromised or Failure by 2040	Total Number of septic systems within 50 feet of project and Abutting existing sewer infrastructure (Abutting)	Non-Vulnerable by 2040	Compromised or Failure by 2040
WASDSewer	15241	Furnish and Install 10-inch and 6-inch Force Main in Golden Beach Drive and in Collins Avenue from PS No.0493 to MH 0137	Replace the existing 8-inch DIP with 10" FM along Golden Beach Dr and Collins Av due to corrosion and previous failure.	7	0	7	7	0	7
WASDSewer	13116	REPLACEMENT OF 12-INCH AND 18-INCH DIFMS ON ISLAND BLVD, FROM PS-0499 TO PS-0471	Replacement of 12" and 18" DIFM on Island Blvd., from PS-0499 to PS-0471.	6	4	2	4	3	1
WASDSewer	16177	36-INCH FORCEMAIN INTERCONNECTON AT SW 112 AVE BETWEEN SW 32 AND 38 ST	Approximately 1,600 LF of 36-inch forcemain along SW 112nd Ave between 32 and 38 St	4	4	0	2	2	0
WASDSewer	16179	PS-0415 TO PS-0422 TRANSMISSION FORCEMAIN REPLACEMENT	Replacement of the 12-inch, 16-inch, and 24-inch force main from PS415 to the FM network near the discharge of PS422	2	2	0	1	1	0
WASDSewer	15546	REPLACEMENT OF 1950 LF OF 6-INCH CI FM FROM PS-0138 TO KNOLLWOOD DR ALONG CRANDON BLVD	Replace the existing 6-inch force main due to corrosion and previous breaks.	1	1	0	1	1	0
WASDWater	15151	WATER AND WASTEWATER SERVICE TO COMMERCIAL PROPERTIES - GREEN TECH CORRIDOR - S-8 - BASIN 73	Design, permitting, and installation of 3,760 LF of 8-inch gravity sewer and 10,970 LF of 12-inch water main along NW 27th Ave., from 24th St. to 28th St.	117	92	25	26	23	3
WASDWater	15149	WATER AND WASTEWATER SERVICE TO COMMERCIAL PROPERTIES-GREEN TECH CORRIDOR-S-4-GRAVITY-FORCE -WATER MAINS	Extend sanitary sewer to unsewered commercial and industrial property.	94	75	19	5	5	0
WASDWater	15835	WW SERVICE TO COMMERCIAL PROPERTIES-PROJECT D2-C-2-GRAVITY/FORCE MAIN AND WATER MAINS	NW 87th Street and NW 21st Ct. South Basin D2-C-2 Gravity and FM Sewer Pipe Commercial Corridors. Extend Sanitarysewer service to unsewered commercial & Industrial areas along NW 22nd Avenue.	94	93	1	0	0	0
WASDWater	15523	REPLACEMENT OF 2,111 LF OF 2-INCH WM, WITH 8-INCH DIP WM IN THE AREA BOUNDED BY SW 25TH ST, 26TH ST, 60TH AVE, AND 62ND AVE.	Install approx. 2,111 LF of 8-inch WM in SW 25th St. and in 26th St., between 60th Ave. and 62nd Ave., to replace corroded, undersized 2-inch WM located in the rear of customer properties (details attached).	68	67	1	0	0	0
WASDWater	16098	MOU/MOA 8-INCH WM INSTALLATION ALONG NE 89 ST FROM NE 10 CT TO N. BAYSHORE DR.	Install approximately 1700 LF of 8-inch DIP WM along NE 89 St from NE 10 Ct to N. Bayshore Dr	39	6	33	0	0	0

AGENCY NAME	PROJECT ID	PROJECT NAME	PROJECT SCOPE	Total Number of Septic Systems within 50 feet of project	Non-Vulnerable by 2040	Compromised or Failure by 2040	Total Number of septic systems within 50 feet of project and Abutting existing sewer infrastructure (Abutting)	Non-Vulnerable by 2040	Compromised or Failure by 2040
WASDWater	16159	DESIGN & INSTALL APPROX. 1,360 LF OF 8" DIP ALONG SW 6 ST BET SW 112 & 114 AVE TO REPLACE 2 INCH GALV WM PRESENTING HIGH FREQUENCY OF MAINTENANCE ACTIVITIES AND WATER QUALITY ISSUES.	Design & Install approx. 1,360 LF of 8" DIP along SW 6 ST BET. SW 112 & 114 AVE to replace 2 Inch Galv WM presenting high frequency of maintenance activities and water quality issues. Install Fire Hydrants and Services as needed.	36	1	35	2	0	2
WASDWater	16060	DESIGN AND INSTALL APPROXIMATELY 1140 LF OF 8-INCH DIP ALONG NW 96TH AND 97TH ST BETWEEN NW 14TH AVE AND LITTLE RIVER DR	Design and install approx. 1140 LF of 8-inch DIP along NW 96th and NW 97th ST b/w NW 14th Ave and Little River Dr. to replace 2" Galv. WM. 6 repair incidents are documented. Water Quality issues (green color) reported. Install FHs & services as needed.	32	3	29	0	0	0
WASDWater	15517	WATER AND WASTEWATER SERVICES TO COMMERCIAL PROPERTIES-GREEN TECH CORRIDOR-S-8-GRAVITY/FORCE MAINS BASIN 76	Design, permitting and construction of approximately 650 lf of 8-in and 2905 lf of 10-in Gravity Main and 3,650 lf of 12-in Water Main	28	28	0	0	0	0
WASDWater	16180	INSTALL APPROX. 5,321.9 LF OF 12" DIP WATER MAIN ALONG SW 82 AVE BETWEEN SW 58 ST AND SW 72 TER	Design & Install approx. 5,321.9 LF of 12" DIP Water Main along SW 82 AVE BETWEEN SW 58 ST AND SW 72 TER to close gaps that will improve water quality and provide redundancy in the distribution system. Install FHs and Services as needed.	27	27	0	0	0	0
WASDWater	14542	54-INCH LOW PRESSURE WATER MAIN INSTALLATION IN NW 62 ST BETWEEN NW 37 AVE TO NW 19 AVE THEN ALONG NW 19 AVE BETWEEN NW 62 TO NW 67 ST THEN ALONG NW 67 ST FROM NW 19 AVE TO 67 ST REMOTE PUMP STATION	54-inch low pressure water main installation in nw 62 st between nw 37 ave to nw 19 ave then along nw 19 ave between nw 62 to nw 67 st then along nw 67 st from nw 19 ave to 67 st remote pump station	25	23	2	22	20	2
WASDWater	16175	DESIGN & INSTALL APPROX. 1,408 LF OF 8" DIP ALONG SW 141 TER BET SW 72 & 74 CT TO REPLACE 2" WM WHICH HAS A LONG HISTORY OF REPAIRS. TOTAL OF 10 DOCUMENTED INCIDENTS ARE IN RECORDS.	Design & Install approx. 1,408 LF of 8" DIP along SW 141 TER BET SW 72 & 74 CT to replace 2" WM which has a long history of repairs. 10 documented incidents are in records. Install Fire Hydrants and Services needed.	25	25	0	0	0	0

AGENCY NAME	PROJECT ID	PROJECT NAME	PROJECT SCOPE	Total Number of Septic Systems within 50 feet of project	Non-Vulnerable by 2040	Compromised or Failure by 2040	Total Number of septic systems within 50 feet of project and Abutting existing sewer infrastructure (Abutting)	Non-Vulnerable by 2040	Compromised or Failure by 2040
WASDWater	15374	MOA INSTALLATION OF 12-INCH D.I.P. WATER MAIN & SERVICE RECONNECTIONS ON S.W. 268 ST FROM WEST OF S.W. 139 AVE. TO EAST OF S.W. 123 PL.	Design, permit, and install approx. 7,000 LF of new 12-inch WM along SW 268th St., as part of DTPW roadway improvements, from SW 139th Ave. to 123rd Ave.	24	24	0	0	0	0
WASDWater	16172	DESIGN & INSTALL APPROX 850 LF OF 8" DIP ALONG SW 103 CT BET SW 146 TER & 149 ST TO REPLACE CORRODED 2" GALV WM WITH HIGH FREQUENCY OF FAILURES. TOTAL OF 9 DOCUMENTED INCIDENTS WERE FOUND.	Design & Install approx. 850 LF of 8" DIP along SW 103 CT BET SW 146 TER & 149 ST to replace corroded 2" Galv WM with high frequency of failures. Total of 9 documented incidents were found. Install services and fire hydrants as needed.	24	24	0	0	0	0
WASDWater	14629	REPLACE 1,260 LF OF 2-IN PIPE WITH 8-IN DIWM IN SW 95TH AVE AND IN 96TH AVE, BTWN 144TH ST AND 146TH ST	Install approx. 1,260 LF of 8-inch DIWM to replace undersized corroded pipeline; include fire hydrants, water services, valves, and stubs, as required.	20	20	0	0	0	0
WASDWater	16174	DESIGN & INSTALL APPROX. 1,198.5 LF OF 8" DIP ALONG SW 179 TER BETW SW 93 & 94 AVE TO REPLACE HIGHLY CORRODED 2" GALV. WM PRESENTING RECURRENT MAINTENANCE ISSUES.	Design & Install approx. 1,198.5 LF of 8" DIP along SW 179 TER BETW SW 93 & 94 AVE to replace 2" Galv. WM presenting recurrent maintenance issues. Total of 7 documented incidents were found. Provide services and fire hydrants as needed.	19	19	0	0	0	0
WASDWater	15004	INSTALLATION OF 800 LF OF 8-IN DIWM TO REPLACE DETERIORATED, UNDERSIZED WATER INFRASTRUCTURE IN LITTLE RIVER AREA	Install approx. 800 LF of 8-inch DIWM to replace deteriorated, undersized 2-inch pipelines (see attachment). Include fire hydrants, stubouts, and services as needed.	18	0	18	0	0	0
WASDWater	16077	DESIGN & INSTALL APPROX. 1,028 LF OF 8" DIP ALONG NW 83RD TER & 35TH AVE BETW. NW 35TH PL & 35TH AVE TO REPLACE UNDERSIZED AND HIGHLY CORRODED 2" GALV. WATER MAIN. LOW PRESSURE COMPLAINTS REPORTED	Design & Install approx. 1,028 LF of 8" DIP along NW 83rd TER & 35th Ave Betw. NW 35th PL and 35th Ave to replace undersized and highly corroded 2" Galv. WM. Low pressure complaints and maintenance issues in the area. Install FHs & Services as needed.	17	17	0	0	0	0
WASDWater	14597	Furnish and Install 8" D.I.P. WM ALONG NORTH BAY HOMES DRIVE FROM SW 37 AVE. TO SOUTH BAY HOMES DRIVE.	Design, permit, and install approx. 1,580 LF of 8" DIWM along North Bay Homes Drive from SW 37 Ave. to South Bay Homes Drive. City of Miami JPA. City of Miami Roadway project No. B-30835.	16	12	4	0	0	0
WASDWater	14977	INSTALLATION OF 2,100 LF OF 8-IN DIWM ALONG RIVIERA DR, BETWEEN HARDEE RD AND SW 42ND AVE	Install approx. 2,100 LF of 8-in DIWM, including fire hydrants, water services, valves, and stubs, as required.	16	16	0	0	0	0

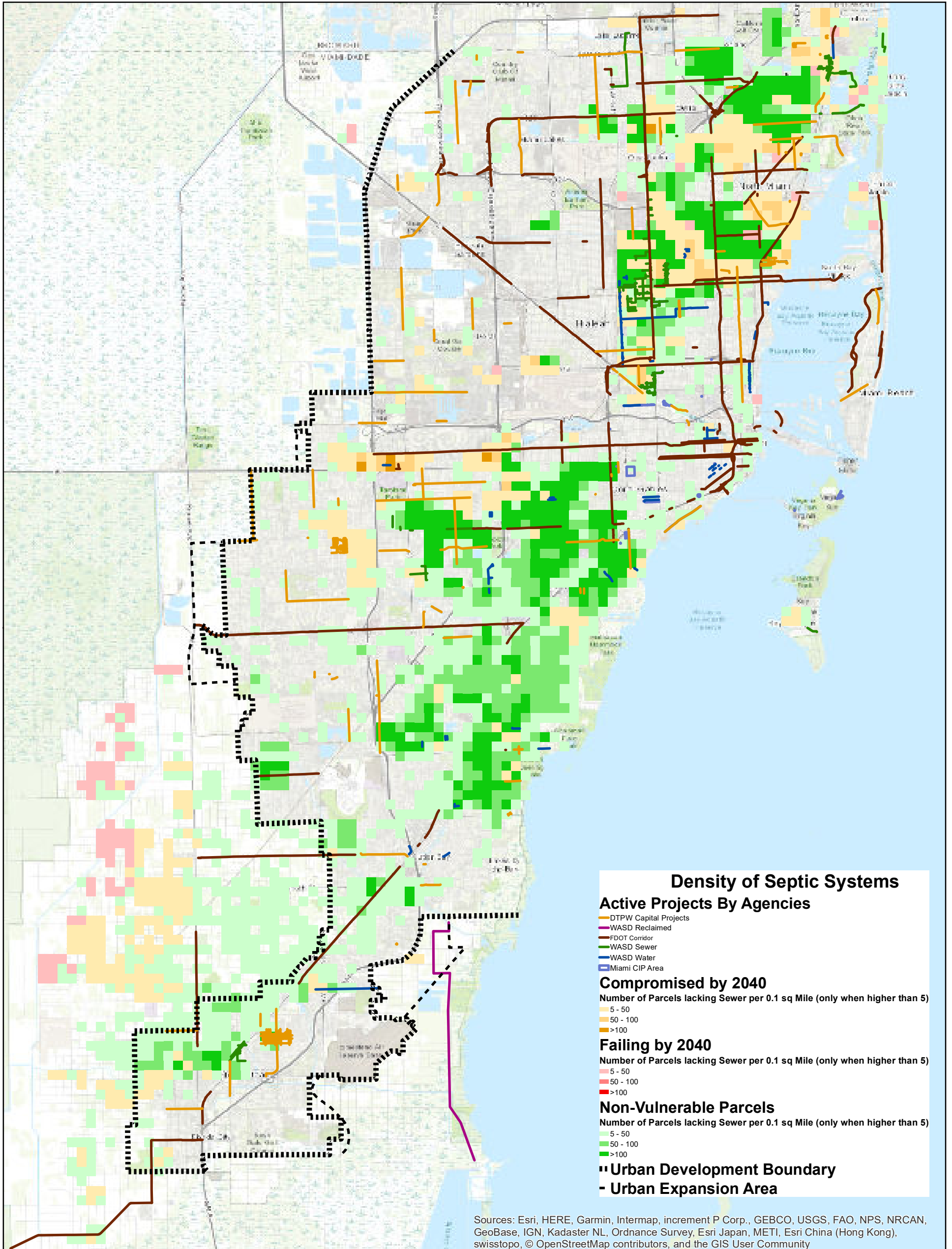
AGENCY NAME	PROJECT ID	PROJECT NAME	PROJECT SCOPE	Total Number of Septic Systems within 50 feet of project	Non-Vulnerable by 2040	Compromised or Failure by 2040	Total Number of septic systems within 50 feet of project and Abutting existing sewer infrastructure (Abutting)	Non-Vulnerable by 2040	Compromised or Failure by 2040
WASDWater	15405	FURNISH AND INSTALL 12-INCH D.I. WATER MAIN IN NW 18 AVE. FROM NW 62 ST. TO NW 71 ST	Replace approx. 2,720 LF of existing 8-inch water main with a new 12-inch water main in NW 18th Ave., from 62nd St. to 71st St.	16	16	0	16	16	0
WASDWater	15630	WATER AND WASTEWATER SERVICE TO COMMERCIAL PROPERTIES-PROJECT D2-A-2-GRAVITY/FORCE/WATER MAINS	NW 27th Ave OPS D2-A Gravity Sewer Pipes, Force Mains, and Water Mains for Commercial Corridors. Extend Sanitary sewer service & upgrade water service to unsewered commercial & Industrial areas along NW 27th Avenue. Includes Phase 2 D2-A-2.	14	12	2	4	3	1
WASDWater	16054	HTA - PROPOSED 16-INCH DI WATER MAIN ALONG NW 37TH AVENUE, FROM NW 36TH STREET TO NW 82ND STREET	Installation of 14,600 LF of proposed 16-inch Water Main along NW 37th Avenue, from NW 36th Street to NW 82nd Street.	14	13	1	6	6	0
WASDWater	16018	INSTALLATION OF 8-INCH D.I.P WATER MAIN ALONG SW 80 AVENUE \$ SW 79 COURT FROM SW 32 STREET TO 34 STREET.	Design & Install approx. 1,318 LF of 8" DIP along SW 80TH Ave & 79th Ct Bet. SW 32nd & 34th St to replace undersized 2" galv. water mains. Several water quality issues reported in the area. Install Fire Hydrants and Services as needed.	12	12	0	1	1	0
WASDWater	15987	INSTALL 525 LF OF 12-INCH DIWM ON NW 38TH ST BETWEEN 29TH AND 27TH AVE TO CLOSE EXISTING GAP AND PROVIDE ADEQUATE FIRE PROTECTION AFTER RETIREMENT OF 6-INCH WM	Design & Install approx. 525 LF of 12" DIP along NW 38th St betw. 29th & 27th Ave to close existing gap in the system and provide adequate fire protection in the area after highly corroded 6" WM is retired. Install FHs & Services as needed.	5	0	5	0	0	0
WASDWater	12298	INSTALLATION OF 6,850 LF OF 8-INCH DI WATER MAIN IN S. BAYSHORE DR, FROM DARWIN ST TO MERCY WAY	Design, permitting, and installation of approx. 6850 LF of 8-inch DI water main in S. Bayshore Dr., from Darwin St. to Mercy Way	3	2	1	1	0	1
WASDWater	15014	FURNISH AND INSTALL 8-INCH D.I.P. WATER MAIN ALONG SW 23 TERRACE FROM SW 32 AVENUE TO SW 27 AVENUE (JPA)	Replace 2,700 LF of 2-inch CIWM with 8-inch DIWM along SW 23rd Ter., including new services and fire hydrants.	3	3	0	3	3	0
WASDWater	11802	FURNISH AND INSTALL 6100 LF OF 16-INCH D.I. WATER MAIN IN NE 2ND AVE FROM 20TH ST TO 36TH ST - PHASE 1	To replace existing 71-year-old 6-inch CIWM and close gap in NE 2nd Ave. from 20th St. to 79th St.	2	2	0	2	2	0
WASDWater	14762	INSTALL 2,500 LF OF 20-INCH WM ALONG BISCAYNE BLVD, FROM AVENTURA BLVD TO NE 191ST ST	Install approx. 2,500 LF of 20" WM along Biscayne Blvd., from Aventura Blvd. to NE 191st St. in Area L	2	1	1	0	0	0

AGENCY NAME	PROJECT ID	PROJECT NAME	PROJECT SCOPE	Total Number of Septic Systems within 50 feet of project	Non-Vulnerable by 2040	Compromised or Failure by 2040	Total Number of septic systems within 50 feet of project and Abutting existing sewer infrastructure (Abutting)	Non-Vulnerable by 2040	Compromised or Failure by 2040
WASDWater	15016	FURNISH AND INSTALL 8-INCH D.I.P. WATER MAIN ALONG SW 24 TERRACE FROM SW 32 AVENUE TO SW 27 AVENUE - JPA CITY OF MIAMI PROJECT No. B-50414	Replace 1,700 LF of 2-inch CIWM with 8-inch DIWM along SW 24th Ter., including new services and fire hydrants.	2	2	0	2	2	0
WASDWater	16092	DESIGN & INSTALL APPROX. 5,266 LF OF 8" DIP IN THE AREA BOUNDED BETWEEN NW 1 ST & NW 11 AVE TO REPLACE AN EXISTING AGED 8" & 2" WMS PRESENTING HIGH FREQUENCY OF MAINTENANCE ISSUES.	Design & Install approx. 5,266 LF of 8" DIP in the area bounded betw. NW 1 St & NW 11 Ave to replace existing aged 8" & 2" WMs presenting high frequency of maintenance activities. The area has 17 documented failures along Water Mains, Service & Valves	2	2	0	2	2	0
WASDWater	16208	DESIGN & INSTALL APPROX. 2,670 LF OF 12" DIP ALONG FEDERAL HWY-BISCAYNE BLVD BETW NE 59 ST TO NE 50 TER TO REPLACE 6" CI WM IN RISK OF STRUCTURAL FAILURE DUE TO AGE AND MATERIAL FACTORS.	Design & Install approx. 2,670 LF of 12" DIP along Federal HWY-Biscayne BLVD BETW NE 59 ST & NE 50 TER to replace 6" CI WM in risk of structural failure due to material and age elements. Provide services and fire hydrants as needed.	2	2	0	2	2	0
WASDWater	14740	REPLACE 1,340 LF OF UNDERSIZED PIPE WITH 8-IN DIWM IN NE 68TH ST, FROM BISCAYNE BLVD TO NE 7TH CT, THEN SOUTH TO BELOW NE 67TH ST	Install approx. 1,340 LF of 8-inch DIWM to replace undersized corroded pipeline; include fire hydrants, water services, valves, and stubs, as required.	1	1	0	1	1	0
WASDWater	15531	REPLACEMENT OF 2,000 LF OF 8-INCH WM IN SW 152NDST, FROM 67TH AVE TO SPRUCE ST	FURNISH AND INSTALL 8-INCH PVC C900 WATER MAIN ALONG SW 152 STREET FROM SW 67 AVENUE TO WEST SIDE OF CANAL AT PARADISE POINT DRIVE ENTRANCE TO ROYAL HARBOUR YACHT CLUB	1	1	0	0	0	0
WASDWater	15752	DESIGN AND INSTALLATION OF 1,239 LF OF 8-INCH DIP TO REPLACE EXISTING HIGHLY CORRODED 2-INCH WM ALONG BAHAMA DR BETWEEN GULFSTREAM RD AND MARLIN RD.	DESIGN AND INSTALLATION OF APPROXIMATELY 1,239 LF OF 8-INCH DIP TO REPLACE EXISTING HIGHLY CORRODED 2-INCH WM ALONG BAHAMA DR BETWEEN GULFSTREAM RD AND MARLIN RD. PROVIDE SERVICES AND FIRE HYDRANTS AS NEEDED.	1	1	0	1	1	0
WASDWater	16096	JPA B-183611A FURNISH AND INSTALL 8-INCH D.I.P. WATER MAIN IN NW 17TH ST FROM NW 32ND AVE TO NW 37TH AVE	JPA B-183611A (INSTALL APPROXIMATELY 2700 LF OF 8-INCH DIP WM ALONG NW 17 ST FROM NW 32 AVE TO NW 37 AVE	1	0	1	1	0	1

AGENCY NAME	PROJECT ID	PROJECT NAME	PROJECT SCOPE	Total Number of Septic Systems within 50 feet of project	Non-Vulnerable by 2040	Compromised or Failure by 2040	Total Number of septic systems within 50 feet of project and Abutting existing sewer infrastructure (Abutting)	Non-Vulnerable by 2040	Compromised or Failure by 2040
WASDWater	16099	DESIGN & INSTALL APPROX. 1,650 LF OF DIP IN THE AREA BOUNDED ALONG SW 200TH DR, 10820 SW 200TH DR CONDOMINIUM AREA AND SW 196TH ST TO REPLACE 6" & 8" PVC WM PRESENTING HIGH RATE OF MAINTENANCE ISSUES	Design & Install approx. 1,650 LF DIP in the area bounded along SW 200Th Dr, 10820 SW 200th Dr condominium area and SW 196th St to replace existing 6" & 8" PVC WMs presenting frequent maintenance issues and water quality complaints.	1	1	0	1	1	0
WASDWater	16223	DESIGN & INSTALL APPROX. 4,010 LF OF 8" DIP IN AREA BOUNDED BETW SW 9 & 5 AVE AND SW 28 RD & 19 AVE TO ELIMINATE SERVICES IN CONFLICT WITH PRIVATE PROPERTIES.	Design & Install approx. 4,010 LF of 8" DIP in area bounded between SW 9 and 5 Ave and SW 28 Rd & 19 Ave to eliminate services in conflict with private properties. Issues were reported at the Development Committee. Provide services and fire hydrants as ne	1	1	0	0	0	0



MIAMI - DADE WATER AND SEWER DEPARTMENT Roadway Projects with Septic System Density & Vulnerability



Sources: Esri, HERE, Garmin, Intermap, increment P Corp., GEBCO, USGS, FAO, NPS, NRCAN, GeoBase, IGN, Kadaster NL, Ordnance Survey, Esri Japan, METI, Esri China (Hong Kong), swisstopo, © OpenStreetMap contributors, and the GIS User Community

MDWASD NOTICE

The materials contained herein are provided "AS IS" and may contain inaccuracies. User is wanted to utilize the materials herein at User's own risk and to verify the material's accuracy independently and ASSUMES THE RISK OF ANY AND ALL LOSS.

MIS/GIS Modified 08-27-2021

