



# Not the Usual Suspects: [new] [Art in [new] Pla [new] Pla



## *EXHIBITION*

**Not the Usual Suspects: [new] Art in [new] Public [new] Places** presents forthcoming and recently completed projects commissioned by Miami-Dade County Art in Public Places Trust. This exhibition brings together a dynamic group of artists who are working to push the boundaries of public art and profoundly enhance the visual landscape of Miami-Dade County. Rendered in various media, from interactive video panels and new media technologies to highly integrated plaza and flooring designs, this exhibition will explore a cross section of innovative public art commissions currently being implemented in Miami-Dade County.

**ON VIEW  
JANUARY 7 — FEBRUARY 20, 2011**

**ARTCENTER | SOUTH FLORIDA  
800/810/924 Lincoln Road  
Miami Beach, FL 33139**



## Introduction 5

## Table of Contents 6

## Essay 7

## Works 9 — 51

### Miami International Airport

Carlos Betancourt North Terminal Development - APM Station B  
Michele Oka Doner North Terminal Development  
Christopher Janney-Mover Station Terminal Connector

### Miami Intermodal Center/Earlington Heights Connector

Michele Oka Doner

### Miami Marlins Stadium

Daniel Arsham/Snarkitecture, Carlos Cruz-Diez, Red Grooms and  
Christian Moeller

### Jackson South Community Hospital

Mikyoung Kim and Leonel Matheu

### Miami-Dade Children's Courthouse

Carlos Alves, Jackie Chang, Roberto Juarez, Mike Mandel and  
Tom Otterness

### Miami-Dade Fire and Rescue Headquarters Facility

Po Shu Wang/Louise Berterson and Adler Guerrier

### South Miami-Dade Cultural Arts Center

Robert Chambers

### GSA Trades Shop Facility

Michelle Weinberg, Shadow Canopy

### Aventura Arts and Culture Center

Edouard Duval Carrie, Aqua Floor

### New Media Project-Stephen P. Clark Government Center Lobby

Ivan Toth Depeña

### Miami Dade Homeless Trust-Verde Gardens Project

Carlos Alves

## Acknowledgements 54

Throughout the course of its thirty-eight year history, Miami-Dade County Art in Public Places has implemented some of the most ingenious, timeless and defining works of public art in the United States. A national leader in the field, the program consistently commissions works of art that capture the spirit of our community and transform our public spaces into grandiose, artistically inspired environments.

With over twenty projects slated to open over the next two years, the program is aggressively pursuing ways to add dimension to our built environment. Not the Usual Suspects: New Art in New Public New Places provides a comprehensive view of the new media, new places and new artists who are working to distinguish the visual landscape of Miami-Dade County. Always willing to push the extreme, these artists are revolutionizing the next era of public art. Their guided visions and endless capacity to surprise promise to produce a thriving, diverse, urban community that reflects the rich cultures, natural habitats, brilliant light, expansive waters and colorful neighborhoods that define our County.

Miami-Dade County Art in Public Places is proud to present this group of emerging, mid career and internationally recognized contemporary artists, the majority of which are living and working in Miami. Highly ambitious and complexly integrated, their works will adorn an array of public venues, including Miami International Airport, Miami Intermodal Center, Children's Courthouse, Miami Marlins Stadium, Jackson South Community Hospital, South Miami-Dade Performing Arts Center, Miami-Dade Homeless Trust Verde Gardens, Miami-Dade Fire and Rescue Headquarters, Stephen P. Clark Government Center and multiple municipal facilities. Ultimately, these projects will provide new aesthetic experiences and broaden our horizons to the potential of public art.

Public art is rooted in collaboration, and it is with the integral support of our Mayor, the Board of County Commissioners, the many County Departments, Municipalities and dedicated volunteers who have served on the Miami-Dade Art in Public Places Trust and the Professional Advisory Committee whose wisdom and foresight have made these works of public art possible. Their progressive vision serves as a confident statement about the importance of visual art in Miami-Dade County.

Brandi Reddick  
Communications and Artists Manager  
Miami-Dade County Art in Public Places

# MIAMI INTERNATIONAL AIRPORT

Carlos Betancourt

North Terminal Development/  
APM Station B

Untitled, 2010  
Sculpted Stone Elements

Commissioning Agency —  
Miami-Dade Aviation

Influenced by the forces of identity, travel, Pop and Kitsch culture, as well as the language of ancient and contemporary symbols, Miami artist Carlos Betancourt has visually transformed the walls of Miami International Airport North Terminal APM Station “B” with ornate imagery based on his personal vocabulary. As stated by Betancourt, “this project celebrates the power of symbols and forms and their magical implications, and I hope to enhance the airport space with this concept.”



# MIAMI INTERNATIONAL AIRPORT

Michele Oka Doner

North Terminal Development

Tropical Garden, 2010  
Terrazzo, bronze and mother-  
of-pearl

Commissioning Agency —  
Miami-Dade Aviation

Envisioned as a continuation of Oka Doner's award-winning and critically acclaimed floor *A Walk on the Beach*, this new project, *Tropical Garden*, transitions from the existing floor and continues throughout the two and a half mile long North Terminal Development. A celebration of South Florida's botanical diversity, nearly nine thousand unique cast bronzes detail abstractions of subtropical seedpods, leaves, flowers and plant structures. Scatterings of mother-of-pearl and larger abalone shell fragments provide depth, texture and shape the visual framework for the floor.



# MIAMI INTERNATIONAL AIRPORT

Christopher Janney

Mover Station Terminal  
Connector

Harmonic Convergence  
Sound and Colored Glass  
Panels

Estimated Completion —  
October 2011

Commissioning Agency —  
Miami-Dade Aviation

Harmonic Convergence will incorporate an interactive sound environment with diagonal patterns of colored glass that will be integrated into the Mover Station Terminal Connector. As people navigate through the space, their activity will influence the melodic layering of natural sound environments created from tropical birds, distant thunder storms, sounds of the Everglades and other environments indigenous to South Florida. As sunlight transitions throughout the space, the colored, diagonal shaped exterior glass will cast dramatic, constantly changing shadow patterns across the floor.



# MIAMI INTERMODAL CENTER/ EARLINGTON HEIGHTS CONNECTOR

Michele Oka Doner

Sargassum  
Etched Glass

Estimated Completion —  
2012

Commissioning Agency —  
Miami-Dade Transit

The Miami Intermodal Center (MIC) - Earlington Heights Connector Station will serve as a key station in the Miami Dade Transit Metrorail system, providing transportation between the Miami International Airport, Downtown Miami and surrounding areas. The main thoroughfare of the station will feature artist Michele Oka Doner's stunning etched glass vestibule. In describing the concept of the work, Oka Doner stated, "The sea itself is a voracious life form, an enclosed universe of masses of leaves and creatures that hide among the multitudes of plant life. Expressing the profundity and fecund nature of this phenomenon that constantly appears at our feet, on our shores and mirrors the compelling motion of the drift is the goal of Sargassum."





# MIAMI MARLINS STADIUM

Daniel Arsham/Snarkitecture

Plaza Roof Column Lighting  
and Commemorative Marker

Untitled  
LED Lighting and Cast concrete

Estimated Completion —  
March 2012

Commissioning Agency —  
Miami Marlins

The Plaza Roof Column Lighting and Commemorative Marker projects will be implemented by Miami native Daniel Arsham/Snarkitecture. For the Plaza Roof Column Lighting, Arsham has proposed an artistic illumination that will gradually drench the columns in light, creating an illusion of the columns appearing and disappearing.

Based on Arsham’s vivid memories of the “Miami Orange Bowl” sign, the Commemorative Mark will replicate the ten foot orange and white lettering on the former football stadium. Arsham will reconstruct the letters to appear as if they tumbled from the side of the stadium and embedded themselves on the east plaza of the new ballpark.



# MIAMI MARLINS STADIUM

Carlos Cruz-Diez

## Stadium Entrance Plaza

### Chromatic Induction in a Double Frequency Tile Pavers

Occupying four acres of land on the western side of the ballpark, the entrance plaza will be one of the largest of any stadium in the history of the United States and will serve as a canvas for Venezuelan artist Carlos Cruz-Diez to transform the vast, urban space into a beautiful, inviting and active entrance way. An integral element of the plaza hardscape, the geometric paving patterns will visually guide stadium visitors from the parking lots to the main entrances of the ballpark. The design of the paving system will be based on color, line and viewer perception, allowing the colors to create a sensation of movement as the relative position of the viewer changes. Entitled Chromatic Induction in a Double Frequency, the paving designs are described by Cruz-Diez as "Chromatic Events in continuous transformation, which alter as pedestrians walk by and as the conditions of sunlight or artificial light vary."



# MIAMI MARLINS

## STADIUM

Red Grooms

Home Run Feature

Untitled  
Multi-media installation

The signature Home Run Feature will be implemented by American pop artist Red Grooms. A pioneer of site-specific sculpture and installation art, Grooms "sculpto-pictorama" design for the Home Run Feature depicts an elaborate tableau of bright colors, stylized water and spectacular lasers. Dotted with clouds, pelicans, seagulls and plenty of Florida-inspired kitsch, the design incorporates moving parts that will activate when a homerun is scored.



# MIAMI MARLINS STADIUM

Christian Moeller

Parking Garages

Untitled  
Fencing and Custom Designed  
Discs

Estimated Completion —  
December 2011

Commissioning Agency —  
City of Miami

The four main vehicular entrances of the Miami Marlins Parking Garages will be marked by German artist Christian Moeller's "bit-map" paintings. Adopting photographs of little league baseball players residing in Little Havana, Moeller will generate images of children peering through a ballpark fence. The large scale murals are created as "bit-map" paintings through a technique developed by Moeller that involves affixing a matrix of plastic discs on fencing; the works are produced with digitally programmed machinery invented by the artist.



# JACKSON SOUTH COMMUNITY HOSPITAL

Mikyoung Kim

Exterior Gardens and  
Landscape

The Ripple Project  
Earth, vegetation, wood and  
stone

Estimated Completion —  
Summer 2011

Commissioning Agency —  
Jackson Healthcare Systems

For the Exterior Gardens and Landscape, environmental designer, visual artist and musician Mikyoun Kim proposed The Ripple Project, a series of sculptural gardens that offer respite from the activities of the hospital. The proposed project incorporates an art environment that layers water, earth, native vegetation, stone and reclaimed wood. Appropriating the formation of water ripples in multiple layers and scales, the design of the gardens offers a comprehensive, fluid design throughout the exterior spaces.



# JACKSON SOUTH COMMUNITY HOSPITAL

Leonel Matheu

Interior Floor Design and  
Wayfinding System

Untitled  
Artist designed VCT flooring  
and acrylic

Miami artist Leonel Matheu's wayfinding system and interior floor design for the Jackson South Community Hospital draws inspiration from the natural elements of the Everglades. The design of the first floor depicts flowing green grasses; the second floor, bubbly forms that suggest water; and the third floor, graphic floral imagery. Matheu will also implement a unique signage system that will correspond to the design of each floor.

**FLOOR CHARACTERISTICS**  
**SECOND FLOOR INPATIENT**  
 WAYFINDING THEME: FLOWER OF THE EVERGLADES (WATER LILIES)  
 COLOR THEME: ORANGE

MATERIAL: COMPOSITE TILES  
 MANUFACTURE: ARMSTRONG  
 TYPE: EXCELON STONETEX  
 COLOR: SWEET AMBER/GOLDEN HONEY

**FLOOR CHARACTERISTICS**  
**THIRD FLOOR INPATIENT**  
 WAYFINDING THEME: WATER OF THE EVERGLADES  
 COLOR THEME: BLUE

MATERIAL: COMPOSITE TILES  
 MANUFACTURE: ARMSTRONG  
 TYPE: EXCELON STONETEX  
 COLOR: LAPIS/TIDAL FOAM

**SINAGE DESIGN ELEMENTS**  
 ACRYLIC WAYFINDING INSERTS

WATER THEME

FLOWERS THEME

GRASS THEMES

# *MIAMI-DADE CHILDREN'S COURTHOUSE*

Carlos Alves

Exterior Entrance Wall

Untitled  
Ceramic Tiles

Estimated Completion —  
2012

Commissioning Agency —  
General Services  
Administration

Carlos Alves, a Miami based artist renowned for his passion in making things out of clay, glass metal, salvaged artifacts and recycled objects, will work with local schools and children's organizations to create an exterior mosaic mural that will grace the entrance of the Courthouse.



# *MIAMI-DADE CHILDREN'S COURTHOUSE*

Jackie Chang

Second Floor Lobby

Just  
Glass Panels

Inspired by the word justice, artist Jackie Chang will create a triptych of three large glass panel murals. The installation will deconstruct the word "just" juxtaposed with the image of water droplets falling into a pool of water. Intended to be highly graphic and "comic book" like, the three panels will be visible to visitors using the escalators from the first to third floors, as well as those entering the second floor courtrooms.





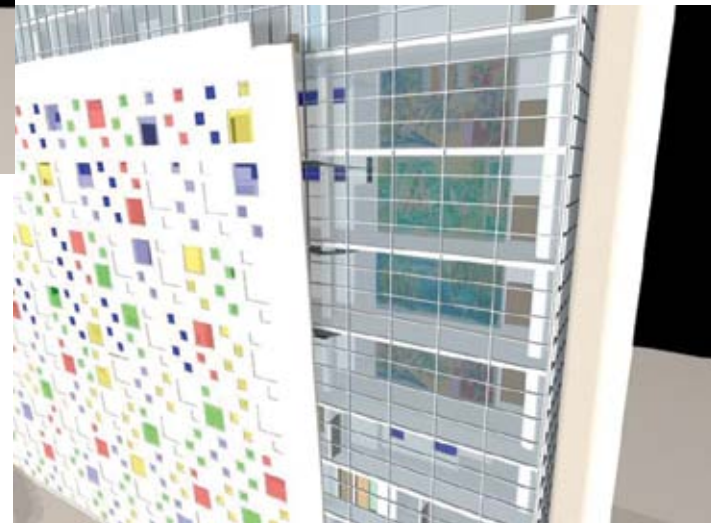
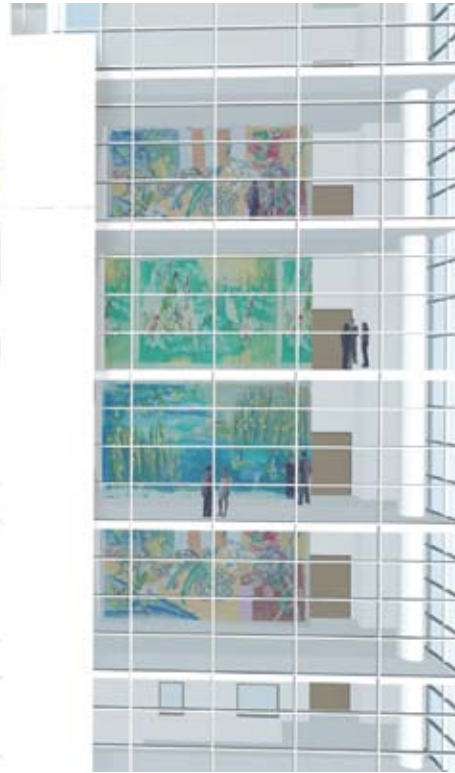
# MIAMI-DADE CHILDREN'S COURTHOUSE

Roberto Juarez

Public Circulation Corridors

Florida Flag Paintings  
Oil on Board

New York painter Roberto Juarez will create a series of four murals which will be sited in the public circulation corridors of Children's Courthouse. Entitled Florida Flag Paintings, the colors and subject matter draw from the South Florida landscape and include birds and plants of the Everglades, flowers, palm trees, Miccosukee textile patterns, sunrises, sunsets, seashells and boats. As the artist states, "the works will be supportive and uplifting to the people who work in the Courthouse and reinforce the sense of respect and authority required for a place where emotional and significant decisions are rendered daily."



# *MIAMI-DADE CHILDREN'S COURTHOUSE*

Mike Mandel

Main Lobby

Untitled  
Photographic Tile Mural

Photographer Mike Mandel will integrate a three story high photographic tile mural to unify the three elevator shaft walls in the main lobbies. To formulate the imagery for this project, Mandel will work with local families and community organizations, resulting in an installation that will reflect a beautiful cross section of the cultural diversity present in Miami-Dade County.



# *MIAMI-DADE CHILDREN'S COURTHOUSE*

Tom Otterness

Main Lobby and Public Areas

Untitled (Florida Black Bear)  
Bronze

Renowned artist Tom Otterness will use the Florida Black Bear as the subject of his installation for the Children's Courthouse. The Florida Black Bear, a native animal of Florida for at least 1.5 million years, is Florida's largest mammal and sadly, is listed as a threatened species by the state of Florida. For Otterness, this creature serves as a metaphor for what the Children's Courthouse will become for the children of Miami-Dade County. In the same way a Bear cub can feel safe and looked after by its mother, the artist believes the children who come into to the courthouse should feel cared for by the court. As stated by Otterness, "The new Children's Courthouse will provide a sanctuary and place of refuge for these children."

A large bronze sculptural installation will be sited at the entrance of the courthouse and will greet visitors as they enter the facility. Comprised of a four foot tall mother bear, playing the role of the Judge, and a series of small bears, who are participating in a trial, the installation mimics the proceedings of the courts. In addition, multiple bear cubs will be found frolicking throughout the public areas of the courthouse.





# *MIAMI-DADE FIRE AND RESCUE HEADQUARTERS FACILITY*

Adler Guerrier

Exterior Gates, Fencing and  
Interior Entranceway

Untitled  
Aluminum, photography,  
drawing and video

For the exterior gates, fencing components and interior entranceway of the training facility, Haitian-born, Miami artist Adler Guerrier will implement a series of symbolic images associated with MDR and the South Florida landscape. Deploying a variety of media including photography, drawing, and video, Guerrier's proposal for the Interior Entranceway explores the effects of a particular geographical region, in this case Miami's pine rock land, superimposed with abstracted collages and a video monitor that will display historical images from the MDR



# *SOUTH MIAMI- DADE CULTURAL ARTS CENTER*

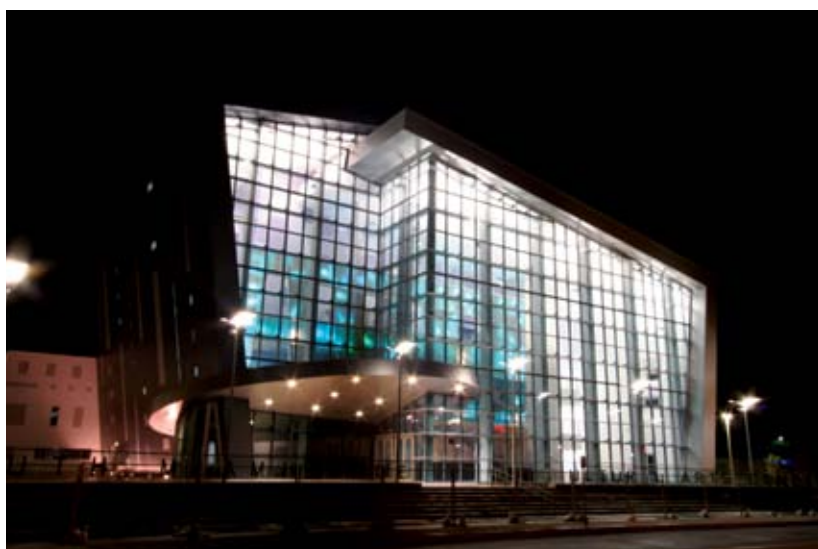
Robert Chambers

Untitled, 2011  
Illuminated LED Wall and  
Marble Sculptures

Commissioning Agency —  
Miami-Dade Department of  
Cultural Affairs

Miami based artist Robert Chambers believes in a holistic approach to art making in which environment, material and subject matter create a unified installation or art piece. The artistic language he employs in his work fuses scientific knowledge, contemporary culture and locality. For the South Miami-Dade Cultural Arts Center, Chambers created

an innovative light piece that will illuminate the entire, translucent inner lobby wall with changing designs created by computer-programmed LED fixtures. In addition, the lobby is adorned with two large scale marble sculptures also created by Chambers.



# *GSA TRADES SHOP FACILITY*

Michelle Weinberg

## Shadow Canopy, 2010

Commissioning Agency —  
General Services  
Administration

The GSA Trades Shop Facility, Miami-Dade County's first LEED Silver Certified facility, is distinguished by Miami artist Michelle Weinberg's "welcome carpet", composed of 12'x12' custom made cement tiles installed throughout the exterior entry plaza. Inspired by decorative arts, typographic design and home décor from the Miami Modern Era, Weinberg's rhythmic pattern installation for the plaza reinterprets vertical shapes found in nature, specifically the shadows cast by the leaves and branches of trees. In keeping with LEED certification standards, the tiles were fabricated by a small manufacturer located across from the project site. As the artist states, "I am dedicated to a lo-tech, hand-painted technique which connects me to the manufacture of the work in a personal way." To compliment the custom made tiles, Weinberg created a unique, hand woven rug, which hangs in the interior entranceway of the facility.



# AVENTURA ARTS AND CULTURE CENTER

Edouard Duval Carrié

Aqua Floor, 2010  
Terrazzo

Commissioning Agency —  
City of Aventura

Miami based artist Edouard Duval Carrié, whose provocative paintings combine African fables, classical mythology and world history, created a terrazzo floor design for the interior lobby of the Aventura Arts and Culture Center. Replicating the sheen and clarity of our tropical waters, the aqua green hued floor is embedded with stylized plant forms influenced by the drawings of botanist Ernst Haeckel and late 19th century photographer Karl Blossfeldt.





# *MIAMI DADE HOMELESS TRUST VERDE GARDENS PROJECT*

Carlos Alves

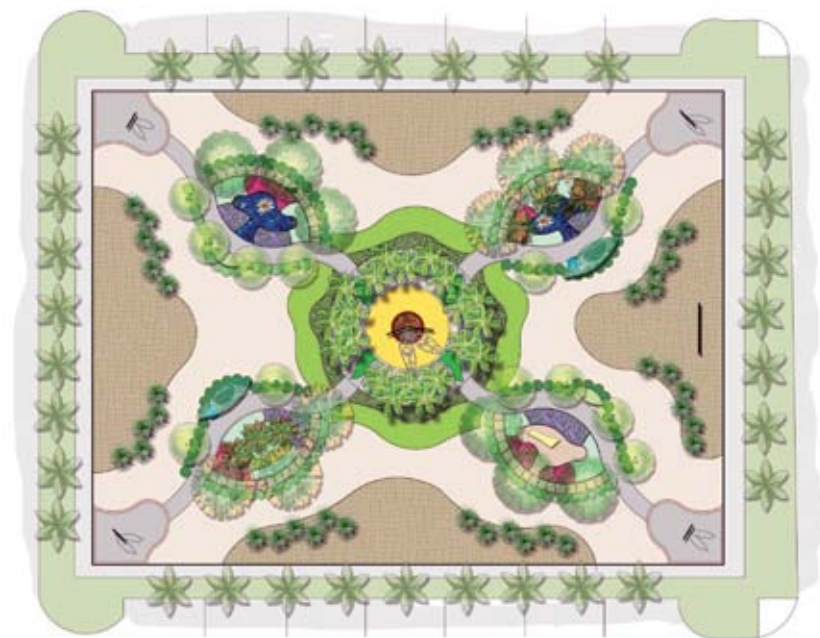
Central Plaza

Untitled, Plaza Design

Estimated Completion —  
May 2011

Commissioning Agency —  
Miami-Dade Homeless Trust

For the Verde Gardens Housing Project, Miami artist Carlos Alves will design a collection of mini-gardens for the central plaza. Consisting of a of a Butterfly Garden, Meditation Garden and two secret, interpretive gardens, great care will be taken to choose proper plants from local farms in the Homestead area. Featuring mosaic tiles and leaf-shaped benches embellished



# *NEW MEDIA PROJECT STEPHEN P. CLARK GOVERNMENT CENTER*

Ivan Toth Depeña

Lobby

Untitled  
Interactive Video Panels

Estimated Completion —  
August 2011

Commissioning Agency —  
General Services  
Administration

Miami artist Ivan Toth Depeña will combine the disciplines of art, architecture and design to fabricate an interactive, new media project for the main lobby of the Stephen P. Clark Government Center. Depeña's installation will manipulate the existing environment by activating selected columns throughout the lobby space and engaging the building's users through video panels that detect the motions of passersby and translates their movements into pixilated fields of color.





## ACKNOWLEDGEMENTS

About Miami-Dade County Art in Public Places  
Miami-Dade County Art in Public Places is a program of the Miami-Dade County Department of Cultural Affairs responsible for the commission and purchase of artworks by contemporary artists in all media. One of the first public art programs in the country, Miami-Dade Art in Public Places was established in 1973 with the passage of an ordinance allocating 1.5% of construction cost of new county buildings for the purchase or commission of artworks, educational programs and collection maintenance. The Art Trust Fund is administered by a County Commission-appointed citizens' board, the Art in Public Places Trust, in consultation with its Professional Advisory Committee. For more information about the Art in Public Places Program and the Miami-Dade Department of Cultural Affairs, please visit [www.miamidade.gov/publicart](http://www.miamidade.gov/publicart) and [www.miamidadearts.org](http://www.miamidadearts.org).

---

### ART IN PUBLIC PLACES TRUST

Cindi Nash, Chairperson  
Susan Ackley  
Mitchell Bierman  
Carol Damian  
Sandi-Jo Gordon  
Julio Grabiell  
Cheryl Jacobs  
Penny Lambeth  
Dr. Paula Levine  
Becky Roper Matkov  
Zammy Migdal  
Francisca O'Farrill

### MIAMI-DADE COUNTY

Carlos Alvarez, Mayor

---

### BOARD OF COUNTY COMMISSIONERS

Joe A. Martinez, Chairman  
Audrey Edmonson, Vice-Chair  
Barbara Jordan District 1  
Jean Monestime District 2  
Audrey Edmonson District 3  
Sally A. Heyman District 4  
Bruno A. Barreiro District 5  
Rebeca Sosa District 6  
Carlos A. Gimenez District 7  
Lynda Bell District 8  
Dennis C. Moss District 9  
Javier D. Souto District 10  
Joe A. Martinez District 11  
José "Pepe" Diaz District 12  
Natacha Seijas District 13

Harvey Ruvlin Clerk, Circuit and County Courts  
Pedro J. Garcia, Property Appraiser

George M. Burgess, County Manager  
Alex Muñoz, Assistant County Manager  
R. A. Cuevas Jr. County Attorney

---

### MIAMI-DADE COUNTY DEPARTMENT OF CULTURAL AFFAIRS

Michael Spring, Director  
Deborah J. Margol, Deputy Director

Carolina Alfonso  
Art in Public Places/Project Manager  
Matthew Andress  
Art in Public Places/Collections Manager  
Brandi Reddick  
Art in Public Places Artists and Communications  
/Manager  
Patricia Romeu  
Art in Public Places/Project Manager

Text by Brandi Reddick  
Catalogue Design by Lemon Yellow



