

ART IN PUBLIC PLACES

MIAMI-DADE COUNTY



Call to Artists: Upland Park

MIAMI-DADE COUNTY ART IN PUBLIC PLACES DEPARTMENT OF CULTURAL AFFAIRS IS A NATIONALLY RENOWNED PUBLIC ART COMMISSIONING PROGRAM

One of the first public art programs in the United States, Miami-Dade County Art in Public Places was established in 1973 with the passage of an ordinance allocating 1.5% of capital costs of new local government buildings for the purchase or commission of artworks in Miami-Dade County. Art in Public Places is overseen by a citizens' Trust appointed by the Board of County Commissioners. The Trust receives recommendations on acquisitions and commissions from the Professional Advisory Committee, an independent group of professionals in the field of art, art history, public art, architecture, landscape architecture and architectural history. Art in Public Places strives to commission significant permanent works of public art from local, national, and international contemporary visual artists.

The program's commissions and acquisitions contribute to and reflect the critical dialogues and artistic methodologies of the time, while embracing the unique context of South Florida. Accessioned artworks join an internationally renowned collection of over 1,000 artworks and are preserved through a lifetime Maintenance and Repair Program. Art in Public Places is dedicated to enriching the public environment and to preserving and enhancing the artistic and civic pride of Miami-Dade County. Art in Public Places promotes collaboration and commissions that improve the visual quality of public spaces, transforming them from ordinary civic areas to places that can lift the spirit and connect with the community. www.miamidadepublicart.org @artinpublicplacesmdc



SIGNATURE PROJECTS / MIAMI-DADE COUNTY ART IN PUBLIC PLACES



THE MIAMI LINE
ROCKNE KREBS, 1984



DROPPED BOWL WITH SCATTERED SLICES AND PEEL
CLAES OLDENBURG & COOSJE VAN BRUGGEN, 1990



A WALK ON THE BEACH: TROPICAL GARDEN
MICHELE OKA DONER, 2012



ZIFF BALLET OPERA HOUSE
JOSE BEDIA, 2006



ED RUSCHA
WORDS WITHOUT THOUGHTS NEVER TO HEAVEN GO
(1985-1989)



MURAL DE MIAMI
JORGE PARDO, 2021

JORGE PARDO | PortMiami



SPACE MOVING LIGHT
TOMÁS SARACENO, 2018



CHROMATIC INDUCTION IN A DOUBLE FREQUENCY
CARLOS CRUZ-DIEZ, 2012



I SEE MYSELF IN YOU...
HANK WILLIS THOMAS & NEKISHA DURRETT, 2019

Brief

Miami-Dade County Department of Cultural Affairs through its Art in Public Places Program (APP), and partners request qualifications for artists to be considered to make full proposals to create new artworks this facility. The selected artist(s) will develop proposals for unique artwork applications that will contribute to the identity of the facility and engage employees, visitors and passers-by in unexpected and delightful ways. Each shortlisted artist will receive a proposal honorarium and support to develop a proposal.

Budget

\$2,150,000.00

(Multiple commissions envisioned)

Location

NW 14 Street and NW 121 Ave, Miami, FL 33182

(Miami-Dade County Commission District 12)

Owners

Miami-Dade County Department of Cultural Affairs

Miami-Dade County Department of Transportation and Public Works

Eligibility

Professional visual artists or artist-led teams with a track record of collaboration based in in the USA.

-Commissioned artists will hire a locally-based consulting firm or representative with authority to make decisions on their behalf, as deemed needed.

Submission

Submit credentials at:

<https://miamidadepublicart.org/app/opportunities/calls-to-artists.page>

Deadline: Monday, May 11, 2026, 11:59PM

-10 samples of completed work

Proposal ideas / images are not requested

-CV

-Brief artist statement

Partners

Terra Group

SVP Development & Construction

Pascual, Perez, Kiliddjian, Starr (PPKS) Architects

HSQ Group

Arquitectonica

Detailed Description

A game-changing step forward in transit-oriented design, Upland Park is South Florida's first master-planned community, all purpose-built for integration with Miami's major east-west transit corridor. Part of [Miami-Dade County SMART Plan](#), this groundbreaking project utilizes transit-supportive land uses to create ample open space for holistic living and working environments at market rate. Upland Park Phase 1 will comprise of 1062 garden-style residentials. Please find additional information on the project from developer [Terra Group](#) and [Miami-Dade County Department of Transportation and Public Works](#).

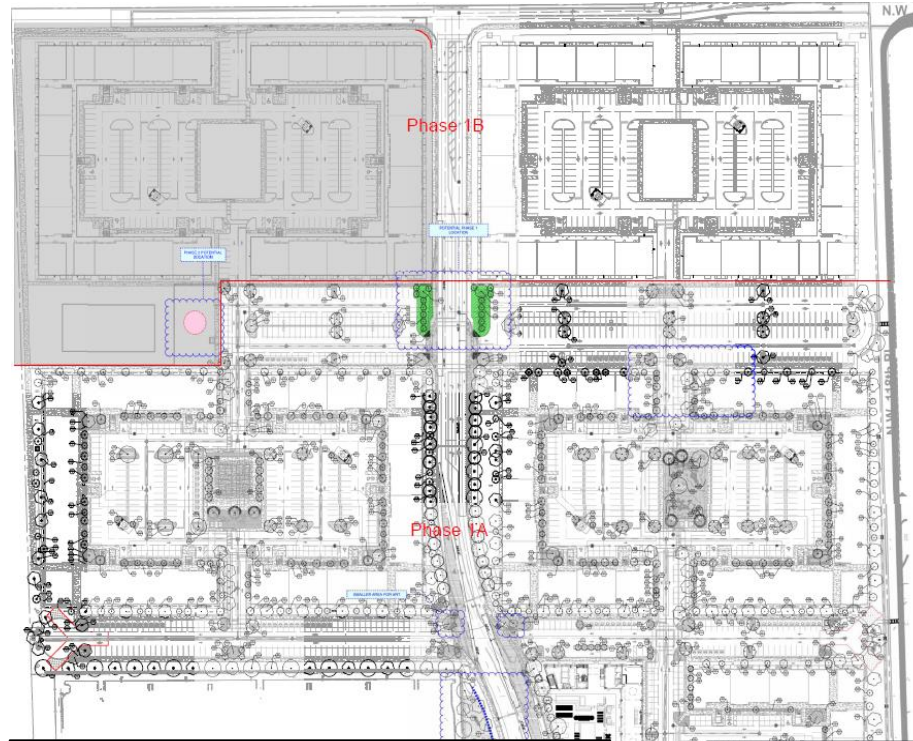
Once completed, Upland Park will become the largest Transit Oriented Community (TOC) in Miami-Dade County to date, generating over one billion dollars in revenue for Miami-Dade County from a 90-year development and land lease agreement. The multi-phased development will include more than 2,000 mid-rise and garden-style multifamily apartments, approximately 282,000 square feet of retail, and about 414,000 square feet of commercial space. Phase One, which is now under construction, encompasses a total of 578 multifamily apartments slated for delivery in 2026.



Renderings courtesy of Terra Group

About the Site

Upland Park Phase 1B consists of 484 units and Upland Park 1A consists of 578 units. Each phase will provide a significant number of residential units within walking distance of the Dolphin Station park & Ride. In addition to its transportation system connection appeal, the development will provide pocket parks with recreational activities, and lush landscaping methodically placed throughout the development.



Opportunities for Public Art: Overview

It is envisioned that a pooled shortlist of artists will be invited to consider multiple opportunities across both phases of Upland Park:

Phase IA: 578 Multi Family Rental Apartments, with 1 Clubhouse and 3 Amenity Parks

Phase IB: 484 Multi Family Rental Apartments, with 1 Clubhouse and 2 Amenity Parks

Opportunities may have stand-alone or continuous applications across phases. *Opportunities for public art include but are not limited to:*

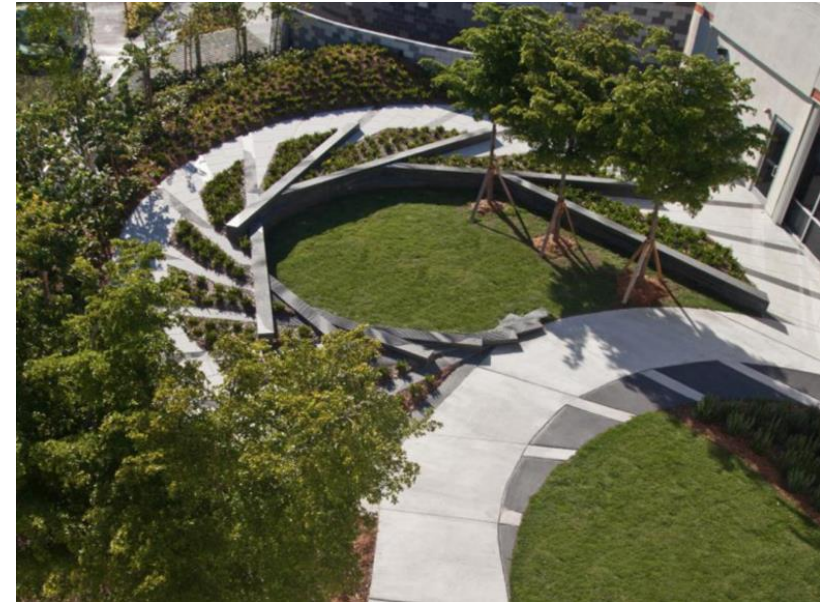
- **Artist Designed Playground**
- **Earthwork / Landscape Artwork**
- **Artist-Designed Fencing**
- **Gateway Feature:** two flanking areas / arch to welcome residents and visitors
- **Wayfinding** elements for major crosswalks, vertical elements at entrances, and / or free standing sculpture that provides visual identification markers. These may include a repeating motif with some variation to create cohesive approach. Specific areas include north and south “welcome” feature to 1B Green area.
- **Free standing sculpture / Artist designed elements**
 - Artist-designed seating for dog park
 - Free-standing sculpture creating identity for Clubhouse
 - Free-standing elements for pocket parks including seating and shading elements
 - Free-standing sculpture or seating elements along walking path adjacent to lake, which continues through both phases.



Opportunities for Public Art Highlights: *Artist-Designed Playground*



Opportunities for Public Art Highlights: *Earthworks and Landscape Artworks*



Mikyong Kim
Ripple Garden, 2011
Jackson South Community Hospital
Image courtesy of Miami-Dade County
Department of Cultural Affairs, Art in Public
Places Trust

Opportunities for Public Art Highlights: *Artist Designed Fencing*

Opportunities include but are not limited to:

- Artist designed fencing leading along 14th Street (a main property boundary)
- Upper and lower fence wrap of Phase 1B



Felice Grodin, *GIANT GREEN ANEMONE*, 2025 Douglas Road Metrorail Station
Amlmatd, *Eden by the Pool*, 2025 Culmer Place, 600 NW 10th Street, Miami FL 33136
Images courtesy of Miami-Dade County Department of Cultural Affairs, Art in Public Places Trust

Opportunities for Public Art Highlights: *Wayfinding*

Opportunities include but are not limited to:

- Gateway Feature / Archway
- Free-standing elements that create identity for specific areas and / or create repeating motifs
- Integrated sidewalks and pathways (Phase 1B)

Left to Right: Nicole Salcedo, Father Marquess Barry Apartments, 2021. Asser St. Val, 2025 at Coconut Grove Metrorail Station. Images courtesy of the Miami-Dade County Department of Cultural Affairs, Art in Public Places Trust. Right: Rendering of Upland Park courtesy of Terra Group.



Opportunities for Public Art Highlights: *Free-standing sculpture and Artist Designed Elements*

Opportunities include but are not limited to:

- Entrance monument
- Free-standing elements for pocket park areas and along sidewalk facing lake-view walking path
- Large-scale work adjacent to Clubhouse
- Artist-designed seating for dog park, pocket parks

From left: Isamu Noguchi, *Slide Mantra*, 1986, Bayfront Park, Jeppe Hein, *Modified Social Bench for Venice #04*, 2019, The Underline; Olaf Breuning, *The Cat*, 2020. Christine E. Lynn Rehabilitation Center at UHealth / Jackson Memorial. Images courtesy of the Miami-Dade County Department of Cultural Affairs, Art in Public Places Trust.



Artist Selection Timeline

**This schedule is subject to change.*

March 30, 2026	Call to Artists released
Monday, May 11, 2026	Deadline to Submit Qualifications
May 12 – May 19, 2026	PAC Orientation and Scoring Period
May 21, 2026	Professional Advisory Committee (PAC) meeting to Select Artists Shortlist
June 16, 2026	Art in Public Places Trust Approval of PAC Recommended Artists Shortlist
June, 2026	Artist notifications / Contractual Execution and Negotiations Artist Orientations (1 & 2) & honorarium documents upload deadline
June / July , 2026	Proposal concept consultation
July / August 2026	Proposal Draft Review
August 18, 2026	Submission of semi-final or final proposal <i>*48-hours prior to presentation. *Adjustments may be made after this date.</i>
August 20, 2026	Proposal presentation at PAC Meeting – Online meeting <i>*A 30-minute presentation appointment time on a defined date will be provided for artist's confirmation. *Final version of the proposal as presented is requested to be uploaded prior to presentation</i>
September 8, 2026	Art in Public Places Trust Approval of PAC Finalist Recommendation / Artist notifications <i>Commissioned artist must negotiate and execute the Design Development contract within 30 days of Trust approval and Artist notifications.</i>
Fall 2027	Estimated Completion - Phase IA (East Side: May 2026 / West Side: September 2026). Artwork implementation completed by fall of 2027.
Fall – winter 2028	Estimated Completion - Phase IB – September 2028

How to Apply

Submit at: <https://miamidadepublicart.org/app/opportunities/calls-to-artists.page>

Deadline: Monday, May 11, 2026, 11:59PM

- 10 samples of completed work
- CV
- Brief artist statement

For this submission, artists are invited to identify each work sample with the medium, dimensions, date, location, client/agency, size, budget, completion date (if applicable), and brief written description. Artists who work in video, sound, installations, and kinetic sculpture may submit a short selection of video, audio or dynamic media file. The application platform, Submittable, is free to register and use. Please, no proposal images or concepts at this time.

Important information for Artists and their Representatives:

Upon shortlist recommendation, the Art In Public Places Trust will contract directly with and communicate solely with the artist and his or her studio designees.

Artist representatives including gallerists or other third parties are encouraged to submit qualifications on behalf of an artist; with the artist's explicit consent and acknowledgement that all further communications and contractual relations associated to this opportunity are to be directly handled by the artist and/or his or her studio designees.

For questions, please contact:

Amanda Sanfilippo Long
Curator & Artist Manager, Art in Public Places
Miami-Dade County Department of Cultural Affairs
111 NW 1st Street, Ste. 625, Miami FL 33128
amandas@miamidade.gov



Hugh Hayden, *Melting Pot*, 2025, MSC Cruises Terminal AA PortMiami.
Image courtesy of Miami-Dade County Department of Cultural Affairs, Art in Public Places Trust

Eligibility

Art in Public Places presents the following definitions and values:

Professional Visual Artist

A person who has created a recognized body of original works of art within an artistic discipline over a sustained period of time, and who is striving to achieve the highest level of professional recognition.

Artist led-teams / Collaboratives

Established artist led-teams and / or artist collaboratives may apply only with completed work samples and credentials attributed to the collaborative work. Submitted work samples cannot be attributed to the practice of a single member in the collaborative, but must be attributed to the Collaborative as a “whole.”

Fabricators

Fabricators producing work through contracts with artists are not eligible to apply on behalf of those artists without consent, nor can fabricators claim completed works as their own artwork.

Geographical Location:

Artists must live and create artwork within the geographic region stated in the Call to Artists for a sustained period of time or on a regular basis. Eligible artists must be readily available for in-person participation and within short driving distance from and to Miami-Dade County.

Third Parties Applying on Behalf of Individual Artists Artists-Led Teams / Artists Collaborative

Third parties such as gallerists, curators, collectors, or otherwise designees submitting on behalf of an artist or established collaborative must clearly identify the artist or collaborative regarding work samples. APP requires that submissions on behalf of multiple artists be done as a single entry per artist. Refer to the following example: *Gallery XX or Artists Designee XX represents (4) different individual artists, therefore Gallery XX/Artists Designee XX will submit (4) separate applications, one for each individual artist with its own CV, Artist’s Statement, and 10 individual images to be credited that single artist.*

New Artists to the Program

To expand the range for artistic creativity and expression in Miami-Dade County, the program seeks to support a diversity and wide range of artists as guided by the expertise of the Professional Advisory Committee. Artists new to the program are strongly encouraged to participate.

Public Art Masterplan

For the purposes of the Master Plan, “art in public places” means “works of art of exceptional quality executed on an appropriate scale and for general public access in public places other than museums, which enrich and give dimension to the public environment”.

About the Process

Pursuant to the procedures of the Miami-Dade County Art in Public Places Program, a group of art and architectural professionals drawn from the Professional Advisory Committee (PAC) will recommend a shortlist of artists to be invited by the Art in Public Places Trust to create design proposals for this opportunity. The primary criteria for shortlist selection is previous artistic accomplishment as demonstrated in images of completed artwork, public art experience, and/or initial design approach to the project as demonstrated in the artist's statement. If appropriate, the PAC reserves the right to recommend artists who may not have applied to this Call to Artists. Upon being recommended to prepare full proposals, shortlisted artists will receive detailed information specific to this public art opportunity, the updated project timetable, and a proposal development contract. All artists are expected to attend a Site Visit and Artist Orientation. The timeframe for these meetings will be provided immediately upon approval of the Artist's Shortlist. Shortlisted Artists will receive a proposal honorarium, as well as an allowance for travel-related expenses as offered by the Trust for personally attending the recommended meetings in Miami-Dade County including the Artist Orientation and final proposal presentation meeting. Artists may choose to present their final proposals virtually via Zoom. Art in Public Places staff will be available to support inquiries throughout the process. Upon the presentation of proposals, the PAC will make recommendations for the final commission to the Art in Public Places Trust for their consideration and approval. The Commissioned artist must negotiate and execute the Design Development contract within 30 days of Trust approval and Artist notification.

Selection Criteria

A. Standard of Excellence

Acquisitions for Art in Public Places shall be, in the judgment of recognized art experts, of exceptional quality and enduring value.

B. Appropriateness to Site

Relationship of artwork and site shall be considered in terms of the physical dimensions, social dynamics, local character and surrounding urban context of the site, existing or planned.

Commissioned and acquired artworks will become part of the collection of the Miami-Dade County Art in Public Places program, made possible with the support of the Art in Public Places Trust, the Miami-Dade County Department of Cultural Affairs and the Cultural Affairs Council, the Miami-Dade County Mayor and Board of County Commissioners.

About the Partners

Miami-Dade County Art in Public Places

Celebrating 50 years, Miami-Dade County Art in Public Places is a program of the Miami-Dade County Department of Cultural Affairs, one of the first public art programs in the country. The program was established in 1973 with the passage of an ordinance allocating 1.5% of capital costs of new local government buildings for the purchase or commission of artworks, educational programs and collection maintenance. The Art Trust Fund is administered by a County Commission-appointed citizens board, the Art in Public Places Trust, in consultation with its Professional Advisory Committee. www.miamidadepublicart.org / www.miamidadearts.org

The Miami-Dade County Department of Cultural Affairs and the Cultural Affairs Council develop cultural excellence, diversity, access and participation throughout Miami-Dade County by strategically creating and promoting equitable opportunities for artists and cultural organizations, and our residents and visitors who are their audiences. Through staff, board and programmatic resources, the Department, the Council and the Trust promote, coordinate and support Miami-Dade County's more than 1,000 not-for-profit cultural organizations as well as thousands of resident artists through grants, technical assistance, public information and interactive community planning. The Department directs the Art in Public Places program and serves its board, the Art in Public Places Trust, commissioning, curating, maintaining and promoting the County's public art collection. The Department receives funding through the Miami-Dade County Mayor and Board of County Commissioners, The Children's Trust, the National Endowment for the Arts, the State of Florida through the Florida Department of State, Florida Division of Arts and Culture and the Florida Council on Arts and Culture, the John S. and James L. Knight Foundation, and The Jorge M. Pérez Family Foundation at The Miami Foundation, and the Taft Foundation. Other support and services are provided by TicketWeb for the Culture Shock Miami program, the Greater Miami Convention and Visitors Bureau, the South Florida Cultural Consortium and the Tourist Development Council. For more information, visit www.miamidadearts.org.

About the Partners

Miami-Dade County Department of Transportation and Public Works

The Miami-Dade County Department of Transportation and Public Works (DTPW) oversees and integrates the county's transportation systems, including Metrorail, Metromover, Metrobus, and specialized transit services. It is responsible for improving mobility, maintaining public infrastructure, managing traffic operations, and supporting major capital projects that enhance regional connectivity. DTPW works to create a safe, efficient, and sustainable transportation network that supports residents, businesses, and visitors, helping to shape the county's long-term economic growth and quality of life.

Terra Group

Terra Group is a Miami-based real estate development firm known for creating innovative, design-focused residential, commercial, and mixed-use projects across South Florida. The company emphasizes sustainable development, community integration, and high-quality architecture, working with leading designers and partners to shape neighborhoods and enhance the urban environment. Terra Group's portfolio spans luxury residences, retail centers, cultural spaces, and large-scale master-planned communities, reflecting a commitment to long-term value, environmental responsibility, and thoughtful city-building.

About the Partners

HSQ Group

HSQ Group is a South Florida–based civil engineering, surveying, and land planning firm known for providing comprehensive design and development services for public and private sector clients. The firm specializes in site planning, transportation engineering, utility design, environmental assessments, and precise surveying solutions that support a wide range of infrastructure and land-development projects. HSQ Group emphasizes technical accuracy, regulatory expertise, and collaborative problem-solving to deliver efficient, cost-effective, and sustainable results. Its portfolio reflects a commitment to improving communities through well-designed, reliable, and resilient infrastructure.

PPKS Architects

Pascual, Perez, Kiliddjian, Starr (PPKS) Architects is a multidisciplinary architecture and design firm based in South Florida, recognized for creating innovative, functional, and community-focused environments. The firm works across sectors such as civic, cultural, residential, commercial, and educational architecture, combining thoughtful design with strong technical expertise to deliver spaces that are both meaningful and efficient. PPKS Architects emphasizes collaboration, sustainability, and context-driven solutions, ensuring each project responds to its surroundings and meets the needs of its users. Their portfolio reflects a commitment to quality, creativity, and lasting impact within the communities they serve.

About the Partners

Arquitectonica

Arquitectonica is an internationally recognized architecture, landscape, and urban design firm based in Miami, Florida. Known for its bold, expressive, and highly contemporary approach, the firm has shaped skylines around the world through striking geometric forms, innovative use of materials, and a strong integration of art and architecture. Arquitectonica works across sectors including residential, commercial, hospitality, civic, and mixed-use development, consistently blending creativity with technical expertise. With a global portfolio spanning the Americas, Europe, Asia, and the Middle East, the firm remains a leader in modern design and influential city-building.

Plusurbia Design

Plusurbia Design is a Miami-based urban design and architecture studio known for creating walkable, sustainable, and community-driven places. The firm focuses on master planning, urban revitalization, zoning, architecture, and public-realm design, with an emphasis on strengthening neighborhoods through human-scaled planning and context-sensitive solutions. Plusurbia collaborates with public agencies, private developers, and community organizations to craft vibrant, resilient environments that balance growth with social and environmental responsibility. Its portfolio reflects a commitment to thoughtful urbanism and innovative design that enhances the quality of life for the communities it serves.



Follow us at:

@artinpublicplacesmdc
@miamidadearts

www.miamidadepublicart.org

Subscribe to [Public Art Email Newsletter](#)

Youtube: [@ArtinPublicPlacesMiami-Dade](#)

ART IN
PUBLIC
PLACES
MIAMI-DADE COUNTY

50
CELEBRATING
YEARS

Americans with Disabilities Act

It is the policy of Miami-Dade County to comply with all the requirements of the Americans with Disabilities Act. To request materials in accessible format, sign language interpreters, CART, and/or any accommodation to participate in Miami-Dade County Department of Cultural Affairs sponsored programs or meetings, please contact Dana Pezoldt, (305-375-2161, culture@miamidade.gov) at least (5) five days in advance to initiate your request. TTY users may also call 711 (Florida Relay Service.)